

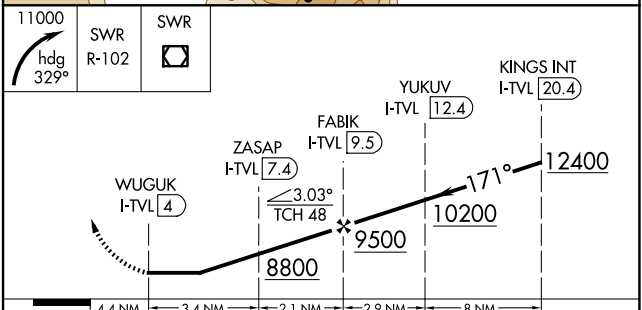
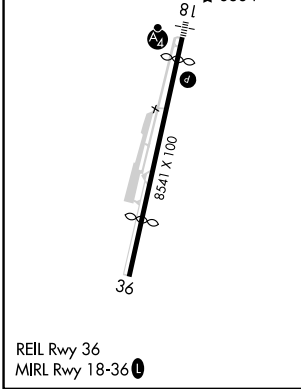
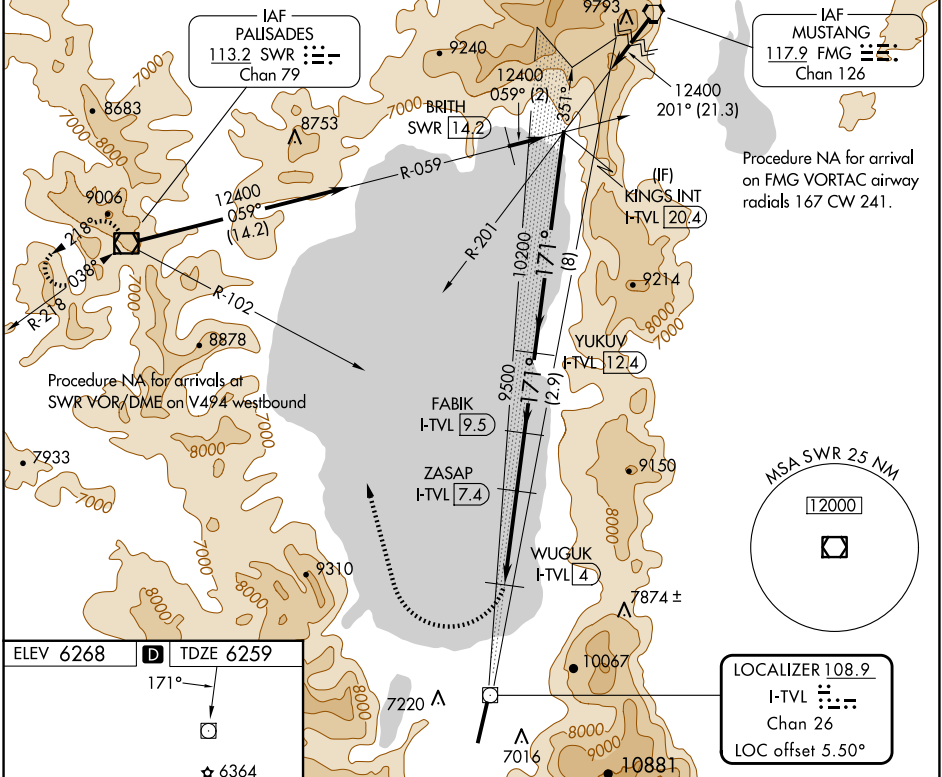
LOC/DME I-TVL 108.9 Chan 26	APP CRS 171°	Rwy Idg TDZE Apt Elev	7017 6259 6268
--	------------------------	-----------------------------	---

LDA RWY 18

LAKE TAHOE (TVL)

DME required.		MALSF	MISSED APPROACH: Climbing right turn to 11000 on heading 329° and SWR VOR/DME R-102 to SWR VOR/DME and hold.
<p>NA Rwy 18 helicopter visibility reduction below 3/4 SM NA. When local altimeter setting not received, procedure NA.</p> <p>-13°C</p>			

ASOS 124.725	OAKLAND CENTER 127.95 316.1	CLNC DEL 134.3	CTAF 122.85
------------------------	---------------------------------------	--------------------------	-----------------------



CATEGORY	A	B	C	D
S-18	7160-5 901 (900-5)			8520-5 2261 (2300-5)

SW-2, 23 JAN 2025 to 20 FEB 2025

SW-2, 23 JAN 2025 to 20 FEB 2025