

# RNAV (GPS) RWY 2 INYOKERN (IYK)

APP CRS <b>017°</b>	Rwy Idg <b>6275</b>
	TDZE <b>2442</b>
	Apt Elev <b>2457</b>

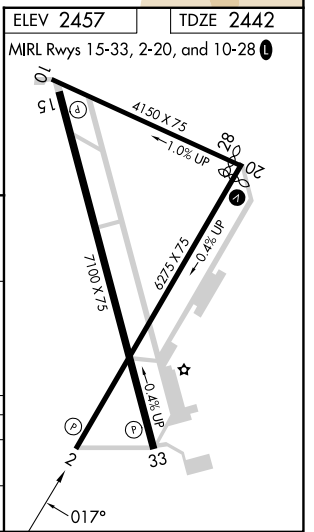
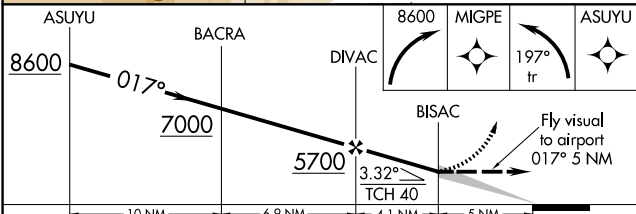
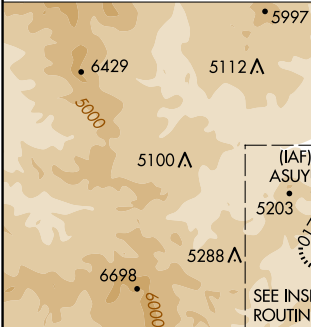
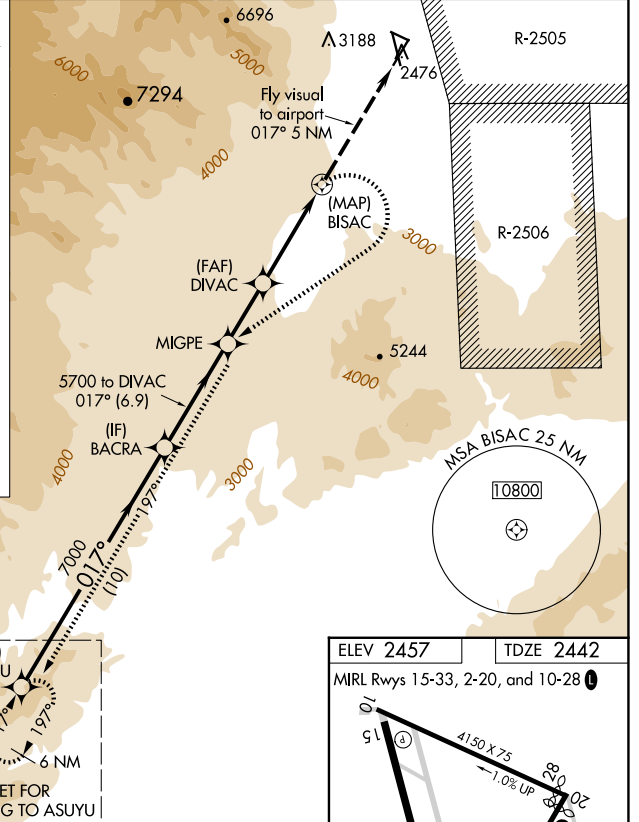
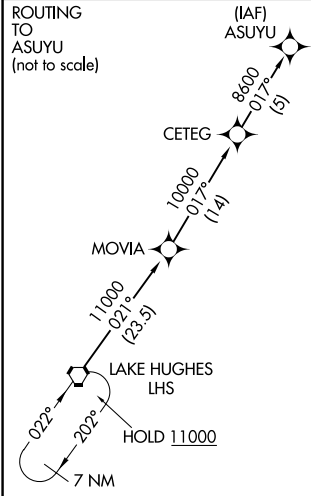
RNP APCH.  
 ⚠️ NA Circling Rwy 10, 33 NA at night. Circling NA east of Rwy 15-33. Circling NA at night west of Rwy 2 and 15. Except for operators with approved weather reporting service, use Mojavave altimeter setting, if not available, procedure NA.

MISSED APPROACH: (Do not exceed 165K until SW bound) Climbing right turn to 8600 direct MIGPE then left turn on track 197° to ASUYU and hold.

MHV AWOS-3  
**132.225**

JOSHUA APP CON  
**133.65 348.7**

AUNICOM  
**122.8 (CTAF) 0**



CATEGORY	A	B	C	D
LNVA MDA	4200-3 1758 (1800-3)			
CIRCLING	4200-3 1743 (1800-3)	4780-3 2323 (2400-3)	5640-3 3183 (3200-3)	

SW-3, 23 JAN 2025 to 20 FEB 2025

SW-3, 23 JAN 2025 to 20 FEB 2025