

LOC I-HYS <b>111.5</b>	APP CRS <b>339°</b>	Rwy Idg TDZE Apt Elev	<b>6501</b> <b>1994</b> <b>1999</b>
---------------------------	------------------------	-----------------------------	---

# ILS or LOC RWY 34

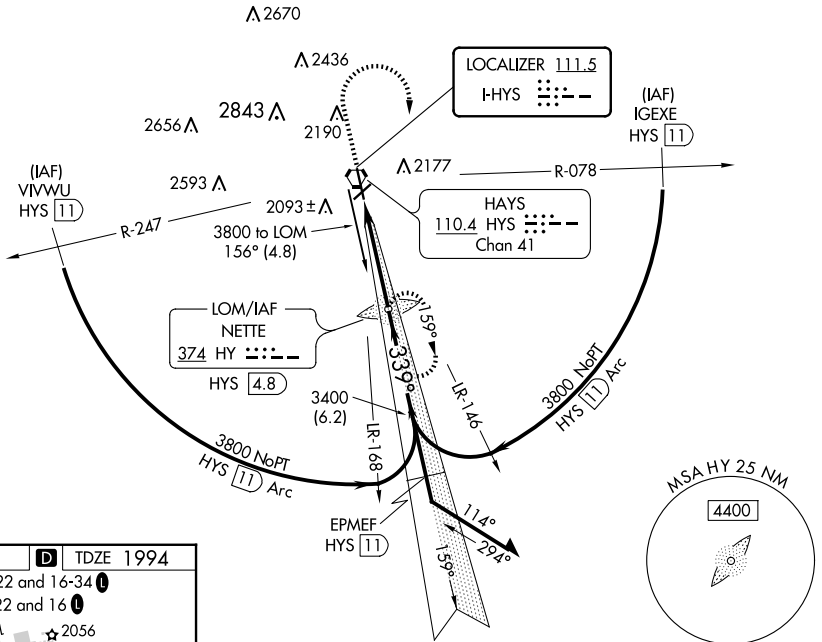
HAYS RGNL (HYS)

**NA** ADF required. Circling NA for Cat D northwest of Rwy 4 and west of Rwy 16. When local altimeter setting not received, use Russell altimeter setting: increase DA to 2263 feet; increase all MDA 80 feet and visibility S-LOC 34 Cat C and Circling Cat C and D ¼ SM. For inoperative MALSRL when using Russell altimeter setting, increase S-ILS all Cats visibility to 1.

**MALSRL**  
MISSED APPROACH: Climb to 2600 then climbing right turn to 3800 direct NETTE LOM/HYS 4.8 DME and hold.

AWOS-3PT <b>125.525</b>	KANSAS CITY CENTER <b>124.4 322.4</b>	UNICOM <b>122.8 (CTAF)</b>
----------------------------	--	-------------------------------

## ADF or DME REQUIRED



NC-2, 23 JAN 2025 to 20 FEB 2025

NC-2, 23 JAN 2025 to 20 FEB 2025

ELEV 1999 **D** TDZE 1994

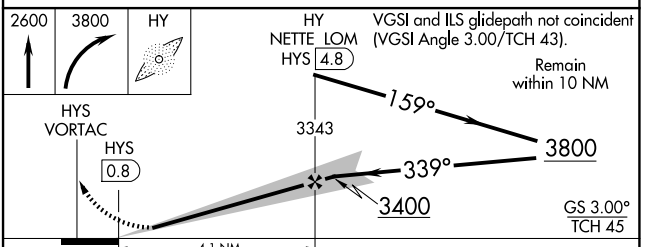
MIRL Rwy 4-22 and 16-34 **I**

REIL Rwy 4, 22 and 16 **I**

339° 4.1 NM from FAF

FAF to MAP 4.1 NM

Knots	60	90	120	150	180
Min:Sec	4:06	2:44	2:03	1:38	1:22



CATEGORY	A	B	C	D
S-ILS 34	2194-½ 200 (200-½)			
S-LOC 34	2340-½ 346 (400-½)		2340-¾ 346 (400-¾)	
CIRCLING	2480-1 481 (500-1)		2560-1½ 2680-2¼ 561 (600-1½) 681 (700-2¼)	