

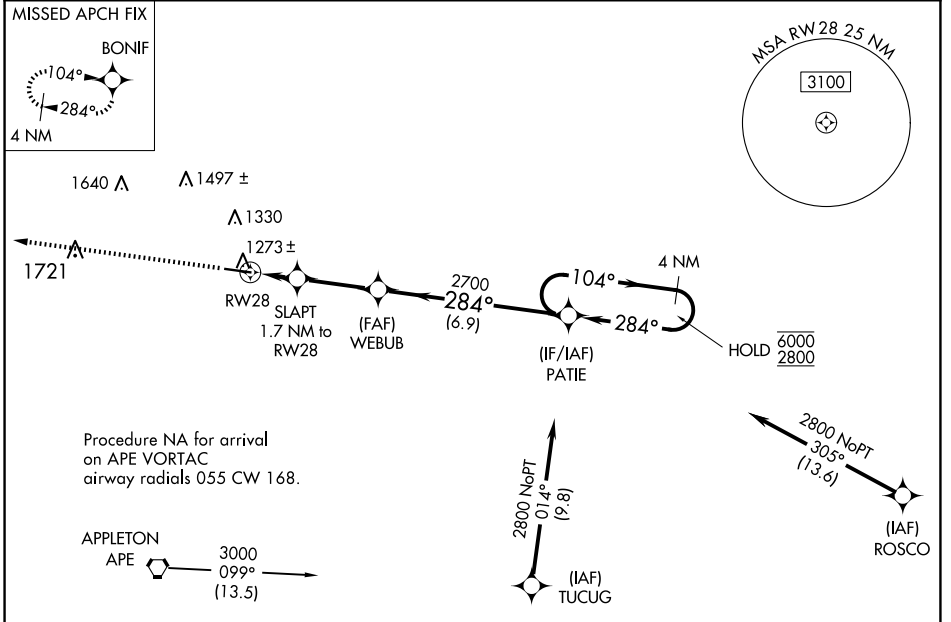
WAAS CH 69423 W28A	APP CRS 284°	Rwy Idg TDZE Apt Elev	5504 1189 1191
--	------------------------	-----------------------------	---

RNAV (GPS) RWY 28

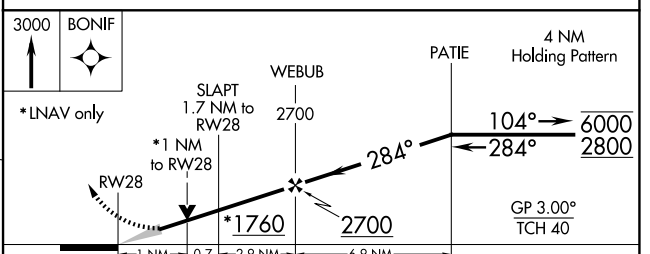
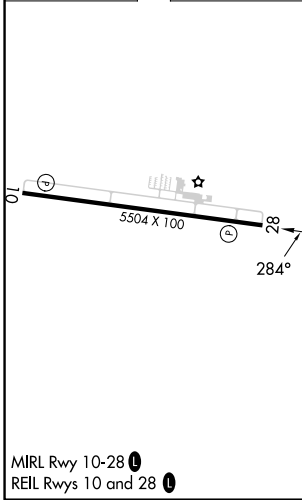
KNOX COUNTY (4I3)

RNP APCH. ▼ For uncompensated Baro-VNAV systems, LNAV/VNAV NA below -17°C or above 36°C.		MISSED APPROACH: Climb to 3000 direct BONIF and hold.	
---	--	---	--

AWOS-3 126.05	COLUMBUS APP CON 125.95 317.775	CLNC DEL 119.45	UNICOM 123.05 (CTAF) 0
-------------------------	---	---------------------------	----------------------------------



ELEV 1191	TDZE 1189
-----------	-----------



CATEGORY	A	B	C	D
LPV DA		1389-1	200 (200-1)	
LNAV/VNAV DA		1439-1	250 (300-1)	
LNAV MDA		1540-1	351 (400-1)	

EC-2, 23 JAN 2025 to 20 FEB 2025

EC-2, 23 JAN 2025 to 20 FEB 2025