

(UECKR6.UECKR) 24137

UECKR SIX DEPARTURE (RNAV)

AL-5449 (FAA)

KENOSHA RGNL (ENW)
KENOSHA, WISCONSIN

ATIS
127.175
CLNC DEL
121.875
118.6 (When twr closed)
GND CON
121.875
MILWAUKEE DEP CON
135.875 317.725

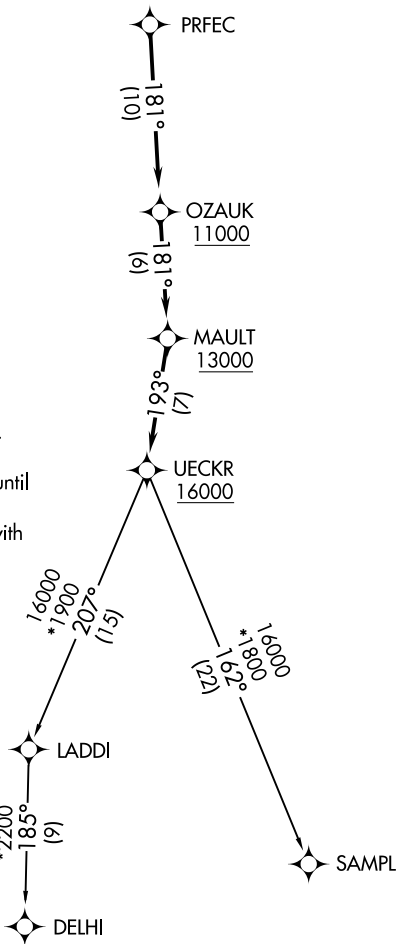
**TOP ALTITUDE:
ASSIGNED BY ATC**



TAKEOFF MINIMUMS

Rwys 7L/R, 15, 25L/R, 33: Standard.

- NOTE: RNAV 1.
- NOTE: GPS or DME/DME/IRU required.
- NOTE: RADAR required.
- NOTE: Turbojet aircraft maintain 250K until advised by ATC.
- NOTE: Notify ATC if unable to comply with crossing restrictions.



NOTE: Chart not to scale.

DEPARTURE ROUTE DESCRIPTION

Climb on assigned heading for RADAR vectors to PRFEC, thence...

...on track 181° to cross OZAUK at or above 11000, then on track 181° to cross MAULT at or above 13000, then on track 193° to cross UECKR at or above 16000, then on (transition). Maintain ATC assigned altitude, expect filed altitude ten minutes after departure.

DELHI TRANSITION (UECKR6.DELHI)

SAMPL TRANSITION (UECKR6.SAMPL)

UECKR SIX DEPARTURE (RNAV)

(UECKR6.UECKR) 26MAR20

KENOSHA, WISCONSIN
KENOSHA RGNL (ENW)

EC-3, 23 JAN 2025 to 20 FEB 2025

EC-3, 23 JAN 2025 to 20 FEB 2025