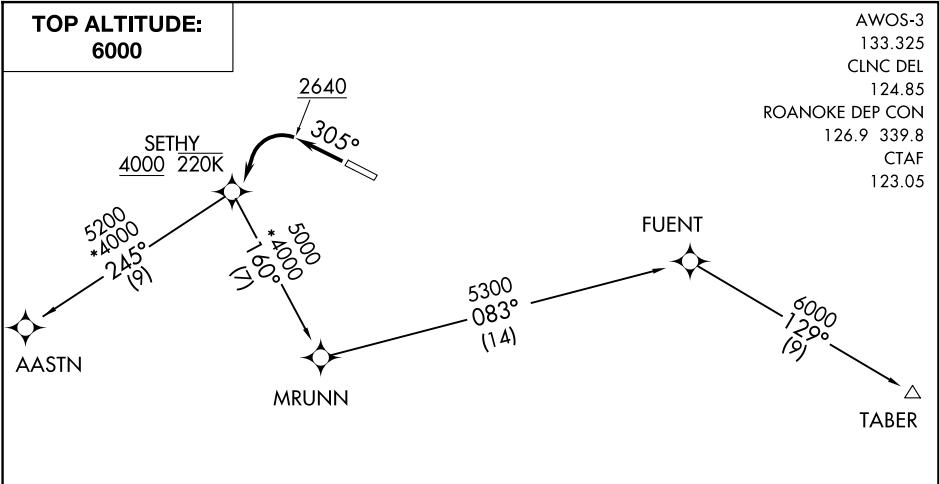


SETHY FIVE DEPARTURE (RNAV)

BLACKSBURG, VIRGINIA



- AWOS-3
- 133.325
- CLNC DEL
- 124.85
- ROANOKE DEP CON
- 126.9 339.8
- CTAF
- 123.05

- NOTE: GPS Required.
- NOTE: RNAV-1.
- NOTE: RADAR Required.
- NOTE: When in RADAR contact, vectors will be provided to filed/assigned route.

TAKEOFF MINIMUMS:

Rwy 13: NA-ATC.

Rwy 31: Standard with minimum climb of 300' per NM to 2640 then minimum climb of 230' per NM to 4000.

NOTE: Chart not to scale.

DEPARTURE ROUTE DESCRIPTION

TAKEOFF RUNWAY 31: Climb heading 305° to 2640, then left turn direct SETHY, cross SETHY at or above 4000, thence....

....On TABER transition. Maintain 6000. Expect clearance to filed altitude/flight level 10 minutes after departure.

....On AASTN transition. At AASTN fly heading 245° or assigned by ATC. Maintain 6000. RADAR vectors will be provided to filed route. Expect clearance to filed altitude/flight level within ten minutes after departure.

AASTN TRANSITION (SETHY5.AASTN):

TABER TRANSITION (SETHY5.TABER):

NE-3, 23 JAN 2025 to 20 FEB 2025

NE-3, 23 JAN 2025 to 20 FEB 2025