

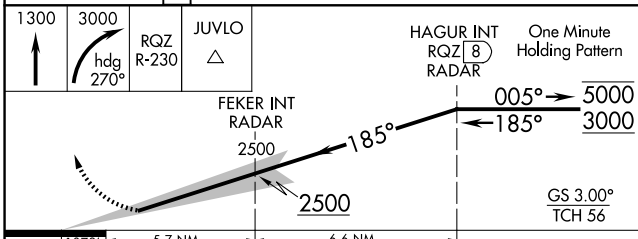
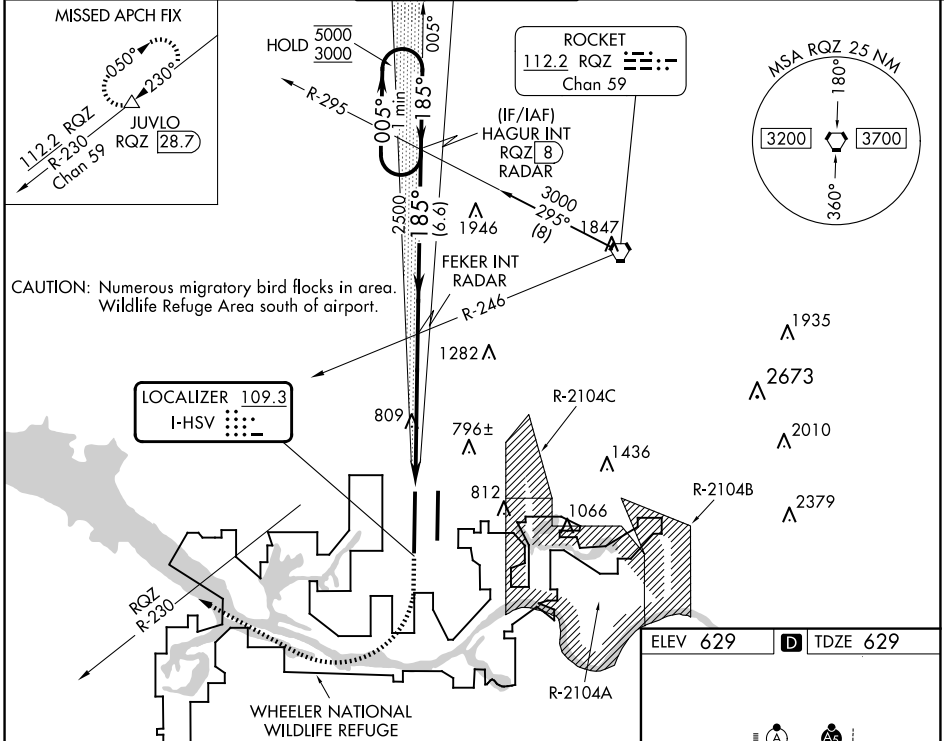
LOC I-HSV <b>109.3</b>	APP CRS <b>185°</b>	Rwy Idg <b>12600</b> TDZE <b>629</b> Apt Elev <b>629</b>
---------------------------	------------------------	--

# ILS RWY 18R (CAT II)

HUNTSVILLE INTL-CARL T JONES FLD (HSV)

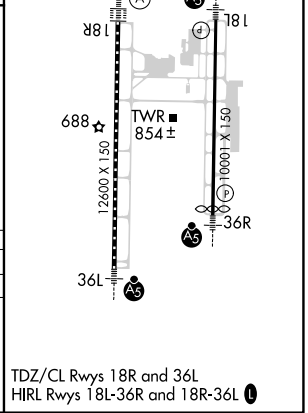
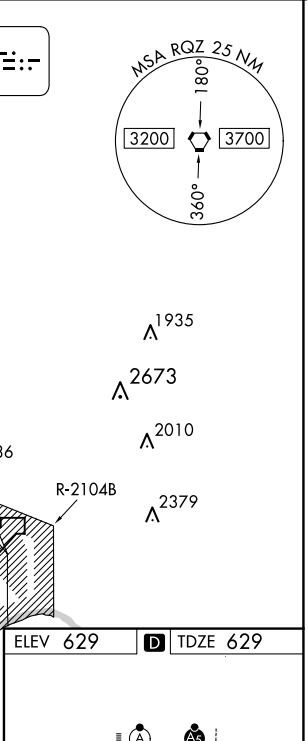
DME required. RADAR required for procedure entry.		ALSIF-2	MISSED APPROACH: Climb to 1300 then climbing right turn to 3000 on heading 270° and RQZ R-230 to JUVLO/RQZ 28.7 DME and hold.
Simultaneous approach authorized. DME from RQZ VORTAC. DME use requires simultaneous reception of I-HSV and RQZ DME.			

ATIS <b>121.25</b>	HUNTSVILLE APP CON * <b>125.6 354.1</b>	HUNTSVILLE TOWER * <b>127.6 (CTAF) 0 350.35</b>	GND CON <b>121.9 269.525</b>	CLNC DEL <b>120.35</b>	UNICOM <b>122.95</b>
-----------------------	--	--	---------------------------------	---------------------------	-------------------------



CATEGORY	A	B	C	D
S-ILS 18R	RA 105/12 100 DA 729			

**CATEGORY II ILS - SPECIAL AIRCREW & AIRCRAFT CERTIFICATION REQUIRED**



SE-4, 23 JAN 2025 to 20 FEB 2025

SE-4, 23 JAN 2025 to 20 FEB 2025