

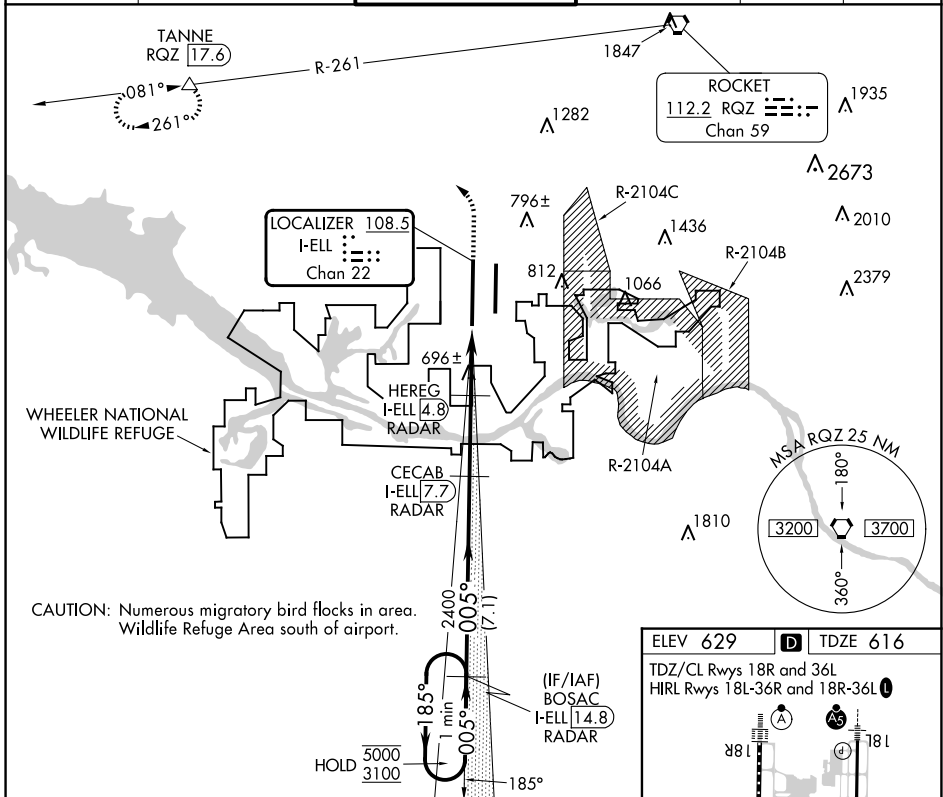
LOC/DME I-ELL 108.5 Chan 22	APP CRS 005°	Rwy Idg 12600 TDZE 616 Apt Elev 629
---	------------------------	--

ILS or LOC RWY 36L

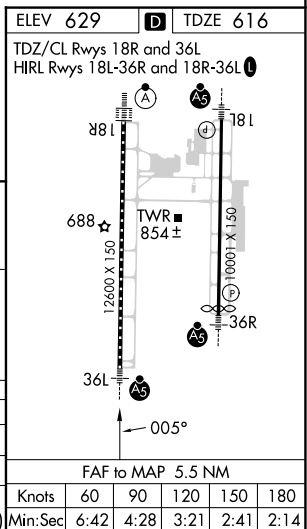
HUNTSVILLE INTL-CARL T JONES FLD (HSV)

DME required. RADAR required for procedure entry.		MALSR 	MISSED APPROACH: Climb to 1100 then climbing left turn to 3000 on heading 350° and RQZ R-261 to TANNE/RQZ 17.6 DME and hold.		
 Circling NA for Cats C/D/E east of Rwy 18L-36R. Simultaneous approach authorized. For inop ALS, increase S-ILS 36L Cat E visibility to RVR 4000, S-LOC 36L Cat C/D/E visibility to RVR 5500. DME from RQZ VORTAC. DME use requires simultaneous reception of I-ELL and RQZ DME.					

ATIS 121.25	HUNTSVILLE APP CON * 125.6 354.1	HUNTSVILLE TOWER * 127.6 (CTAF) 0 350.35	GND CON 121.9 269.525	CLNC DEL 120.35	UNICOM 122.95
-----------------------	--	--	---------------------------------	---------------------------	-------------------------



CAUTION: Numerous migratory bird flocks in area. Wildlife Refuge Area south of airport.



SE-4, 23 JAN 2025 to 20 FEB 2025

SE-4, 23 JAN 2025 to 20 FEB 2025