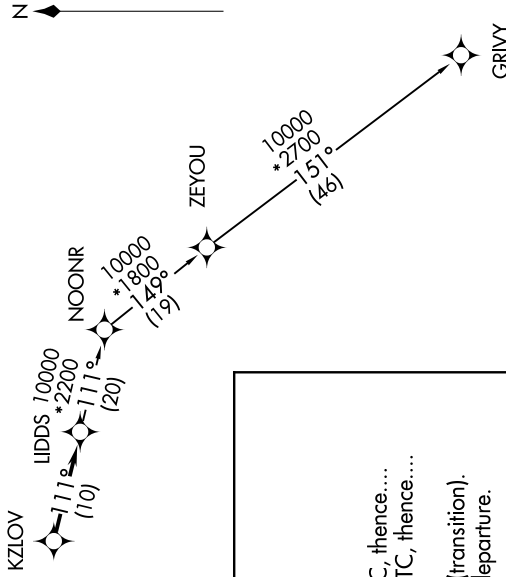


ATIS 134.55  
 CLNC DEL 121.6  
 GND CON 121.6  
 ANN ARBOR TOWER \* 121.6  
 120.3 (CTAF)  
 DETROIT DEP CON 118.95 284.0

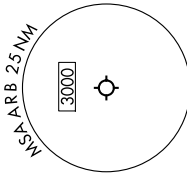
**TAKEOFF MINIMUMS:**  
 Rwys 12, 30: NA - Environmental.  
 Rwys 6, 24: Standard.

RNAV 1 - DME/DME/IRU or GPS.  
 RADAR required.

**TOP ALTITUDE:  
 ASSIGNED BY ATC**



NOTE: Turbopjet departures at/above 10000, maintain 280K until advised by ATC.



**DEPARTURE ROUTE DESCRIPTION**

**TAKEOFF RUNWAY 6:** Climb on heading 060° or as assigned by ATC, thence....  
**TAKEOFF RUNWAY 24:** Climb on heading 240° or as assigned by ATC, thence....  
 ....for RADAR vectors to KZLOV, then on track 111° to LIDDS, then on (transition).  
 Maintain ATC assigned altitude, expect filed altitude 10 minutes after departure.  
**GRVY TRANSITION (LIDDS3.GRVY):**

NOTE: Chart not to scale.