

(KWEEN5.KWEEN) 24081

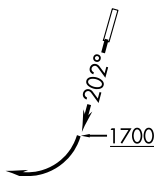
AL-5551 (FAA)

MID-CAROLINA RGNL (RUQ)  
SALISBURY, NORTH CAROLINA

# KWEEN FIVE DEPARTURE (RNAV)

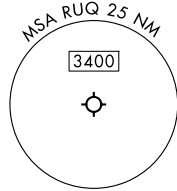
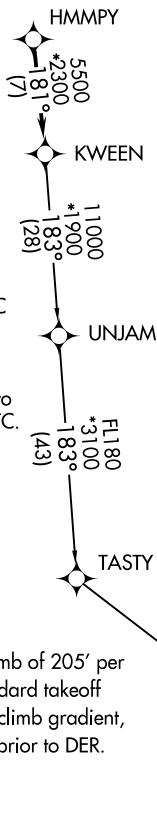
CHARLOTTE DEP CON  
128.325 307.8  
AWOS-3  
118.175  
CLNC DEL  
127.35  
UNICOM  
122.725

**TOP ALTITUDE:  
3000**



RNAV 1 - DME/DME/IRU or GPS.

RADAR required.



- NOTE: For turbo jets only.
- NOTE: Transponder code will be issued via PDC or Charlotte CLNC DEL.
- NOTE: If unable to accept climb rates, advise ATC on initial contact.
- NOTE: Upon reaching 10000 MSL, accelerate to and maintain 280K, if unable advise ATC.

### TAKEOFF MINIMUMS

- Rwy 2: Standard.
- Rwy 20: 400-2¾ or standard with minimum climb of 205' per NM to 1300, or alternatively, with standard takeoff minimums and a normal 200' per NM climb gradient, takeoff must occur no later than 1200' prior to DER.

NOTE: Chart not to scale.

### DEPARTURE ROUTE DESCRIPTION

**TAKEOFF RUNWAY 2:** Climb on heading assigned by ATC, thence...

**TAKEOFF RUNWAY 20:** Climb on heading 202° to 1700 before turning right, then on heading assigned by ATC, thence...

...on RADAR vectors to HMMPY, then on track 181° to KWEEN. Then on assigned transition. Maintain 3000, expect filed altitude within 10 minutes after departure.

PITRW TRANSITION (KWEEN5.PITRW)  
UNJAM TRANSITION (KWEEN5.UNJAM)

# KWEEN FIVE DEPARTURE (RNAV)

(KWEEN5.KWEEN) 21MAR24

SALISBURY, NORTH CAROLINA  
MID-CAROLINA RGNL (RUQ)

SE-2, 23 JAN 2025 to 20 FEB 2025

SE-2, 23 JAN 2025 to 20 FEB 2025