

WAAS CH 87030 W13A	APP CRS 135°	Rwy Idg TDZE Apt Elev	5000 1203 1204
---------------------------------	------------------------	-----------------------------	---

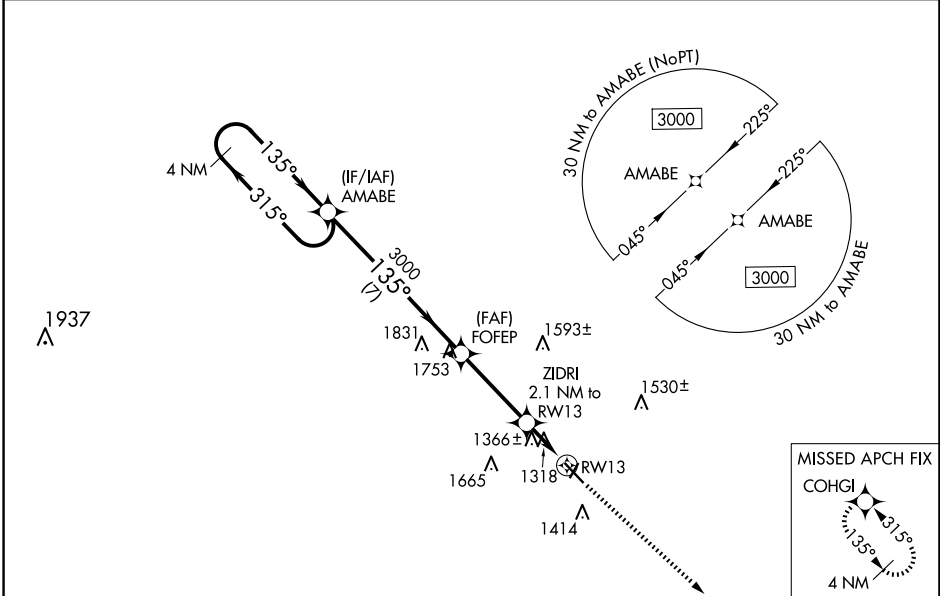
RNAV (GPS) RWY 13

ARTHUR N NEU (CIN)

⚠ For uncompensated Baro-VNAV systems, LNAV/VNAV NA below -17°C (2°F) or above 54°C (130°F). DME/DME RNP-0.3 NA. Baro-VNAV and VDP NA when using Audubon altimeter setting. When local altimeter setting not received, use Audubon altimeter setting; increase LPV DA to 1515 feet; increase LNAV/VNAV DA to 1669 feet and all visibilities ¼ SM; increase all MDAs 80 feet and visibility Cat C ¼ SM.

MISSED APPROACH: Climb to 3000 direct COHGI and hold.

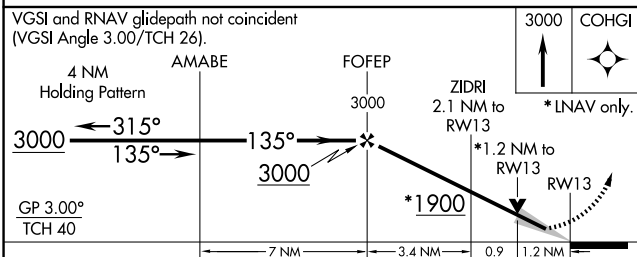
AWOS-3 118.025	MINNEAPOLIS CENTER 134.0 288.3	UNICOM 122.8 (CTAF) 0
--------------------------	--	---------------------------------



NC-3, 23 JAN 2025 to 20 FEB 2025

NC-3, 23 JAN 2025 to 20 FEB 2025

ELEV 1204	TDZE 1203
-----------	-----------



CATEGORY	A	B	C	D
LPV DA	1453-1	250 (300-1)		NA
LNAV/VNAV DA	1607-1 3/8	404 (500-1 3/8)		NA
LNAV MDA	1620-1	417 (500-1)	1620-1 1/8 417 (500-1 1/8)	NA
CIRCLING	1740-1	536 (600-1)	1980-2 1/4 776 (800-2 1/4)	NA

