

WAAS CH <b>62946</b> <b>W14A</b>	APP CRS <b>134°</b>	Rwy Idg TDZE Apt Elev	<b>3604</b> <b>1446</b> <b>1446</b>
--	------------------------	-----------------------------	---

# RNAV (GPS) RWY 14

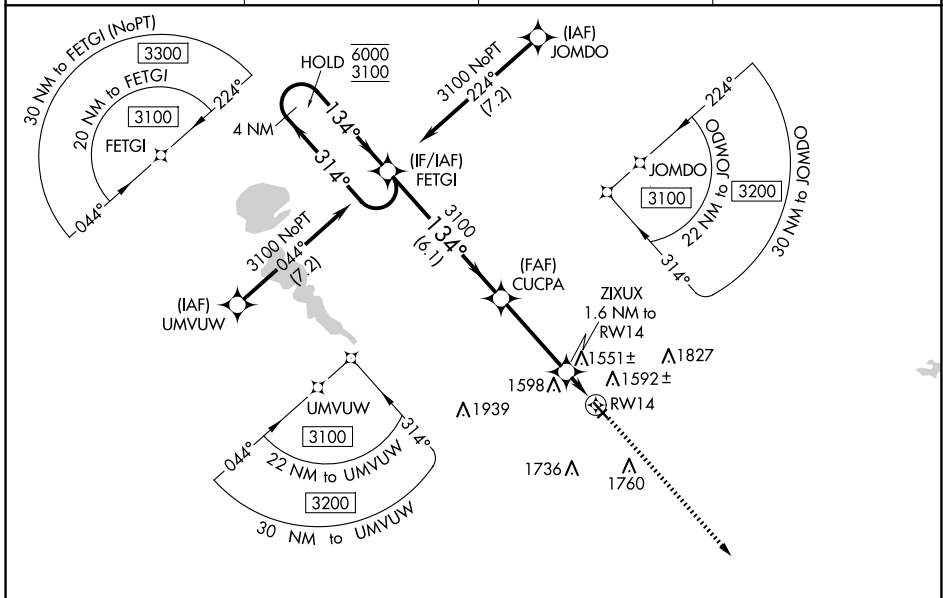
JACKSON MUNI (MJQ)

RNP APCH - GPS.

▼ For uncompensated Baro-VNAV systems, LNAV/VNAV NA below -17°C or above 54°C. Circling NA to Rwy 4 and 22. Rwy 14 helicopter visibility reduction below ¾ SM NA.

▲ MISSED APPROACH: Climb to 3100 direct MCQIN and hold.

AWOS-3 <b>118.1</b>	MINNEAPOLIS CENTER <b>127.75 257.7</b>	GCO <b>121.725</b>	UNICOM <b>122.8 (CTAF) 0</b>
------------------------	---	-----------------------	---------------------------------

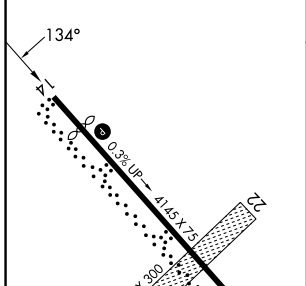


NC-1, 23 JAN 2025 to 20 FEB 2025

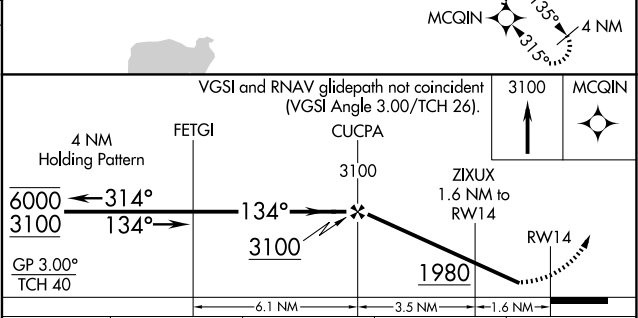
NC-1, 23 JAN 2025 to 20 FEB 2025

▲ 2041

ELEV 1446	TDZE 1446
-----------	-----------



REIL Rwy 14 and 32	MIRL Rwy 14-32
--------------------	----------------



CATEGORY	A	B	C	D
LPV DA	1696-1	250 (300-1)		NA
LNAV/VNAV DA	1838-1½	392 (400-1½)		NA
LNAV MDA	1820-1	374 (400-1)		NA
CIRCLING	2040-1	594 (600-1)		NA