

WAAS CH 65936 W18A	APP CRS 183°	Rwy Idg TDZE Apt Elev	4359 539 539
--	------------------------	-----------------------------	---

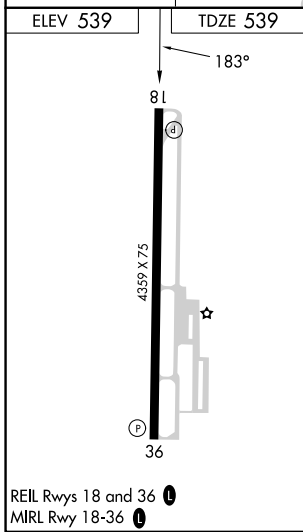
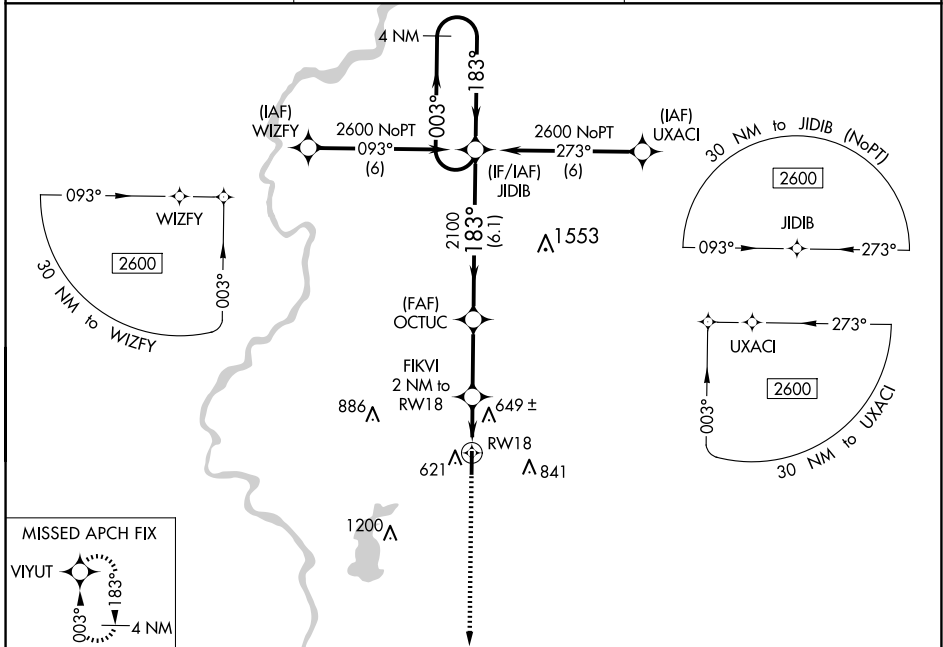
RNAV (GPS) RWY 18

SULLIVAN COUNTY (SIV)

Baro-VNAV NA. DME/DME RNP-0.3 NA. When Robinson altimeter setting is not received, use Terre Haute Intl-Hulman Field altimeter setting and increase all DA/MDA 20 feet.

MISSED APPROACH:
Climb to 2500 direct VIYUT and hold.

RSV AWOS-3 120.5	HULMAN APP CON 135.35 339.8	UNICOM 122.8 (CTAF) 0
----------------------------	---------------------------------------	---------------------------------



ELEV 539	TDZE 539	RED HILLS MOA	
2500 VIYUT	VGS1 and descent angles not coincident (VGS1 Angle 3.00/TCH 40).		4 NM Holding Pattern
*LNAV only	FIKVI 2 NM to RW18	OCTUC 2100	JIDIB 2600
RW18	1200*	2100	GP 3.00° TCH 40
2 NM	2.8 NM	6.1 NM	
CATEGORY	A	B	C D
LPV DA	826-1	287 (300-1)	NA
LNAV/VNAV DA	826-1	287 (300-1)	NA
LNAV MDA	940-1	401 (500-1)	NA
CIRCLING	1000-1 461 (500-1)	1080-1 541 (600-1)	NA

SULLIVAN, INDIANA
Amdt 1 13NOV14

39°07'N-87°27'W

SULLIVAN COUNTY (SIV)

RNAV (GPS) RWY 18

EC-2, 23 JAN 2025 to 20 FEB 2025

EC-2, 23 JAN 2025 to 20 FEB 2025