

WAAS CH 93733 W06A	APP CRS 063°	Rwy Idg 5835 TDZE 81 Apt Elev 86
--	------------------------	---

RNAV (GPS) RWY 6

OCEAN COUNTY (MJX)

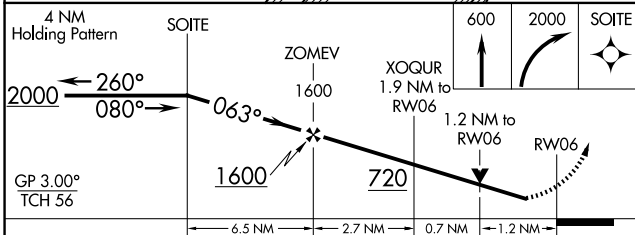
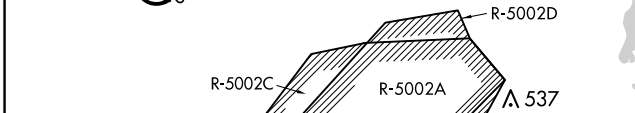
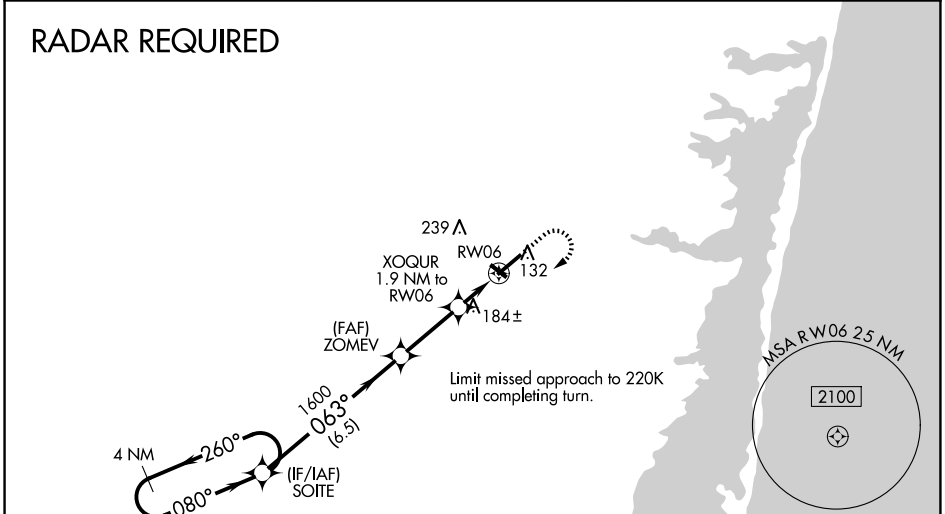
RNP APCH - GPS.

NA Circling Rwy 14, 32 NA at night. For uncompensated Baro-VNAV systems, LNAV/VNAV NA below -15°C or above 54°C. Inop table does not apply to LPV. For inop ALS, increase LNAV/VNAV all Cats and LNAV Cats A/B visibility to 1. When local altimeter setting not received, use Mc Guire Fld (Joint Base Mc Guire Dix Lakehurst) altimeter setting and increase all DA 41 feet and all MDA 60 feet; increase LNAV Cats C/D visibility 1/8 mile and Circling Cat D visibility 1/4 mile. For inop ALS when using Mc Guire Fld (Joint Base Mc Guire Dix Lakehurst) altimeter setting, increase LPV all Cats visibility to 7/8, LNAV/VNAV all Cats visibility to 1 1/8, LNAV Cats A/B visibility to 1, and LNAV Cats C/D visibility to 1 3/8. Rwy 6 helicopter visibility reduction below 3/4 SM NA. VDP and Baro-VNAV NA when using Mc Guire Fld (Joint Base Mc Guire Dix Lakehurst) altimeter setting.

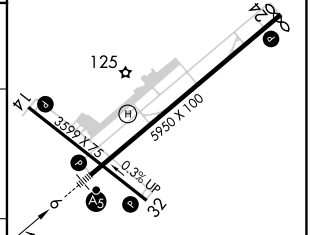
MALS

MISSED APPROACH: Climb to 600 then climbing right turn to 2000 direct SOITE and hold.

AWOS-3PT 119.875	MC GUIRE APP CON 126.475 363.8	UNICOM 122.7 (CTAF) 1
----------------------------	--	---------------------------------



ELEV 86	D	TDZE 81
---------	----------	---------



CATEGORY	A	B	C	D
LPV DA	331-3/4 250 (300-3/4)			
LNAV/VNAV DA	405-3/4 324 (400-3/4)			
LNAV MDA	520-3/4 439 (500-3/4)	520-7/8 439 (500-7/8)		
CIRCLING	540-1 454 (500-1)	560-1 474 (500-1)	580-1 1/2 494 (500-1 1/2)	700-2 614 (700-2)

MIRL Rwy 14-32 **1**
HIRL Rwy 6-24 **1**
REIL Rws 14, 24 and 32 **1**

NE-2, 23 JAN 2025 to 20 FEB 2025

NE-2, 23 JAN 2025 to 20 FEB 2025