

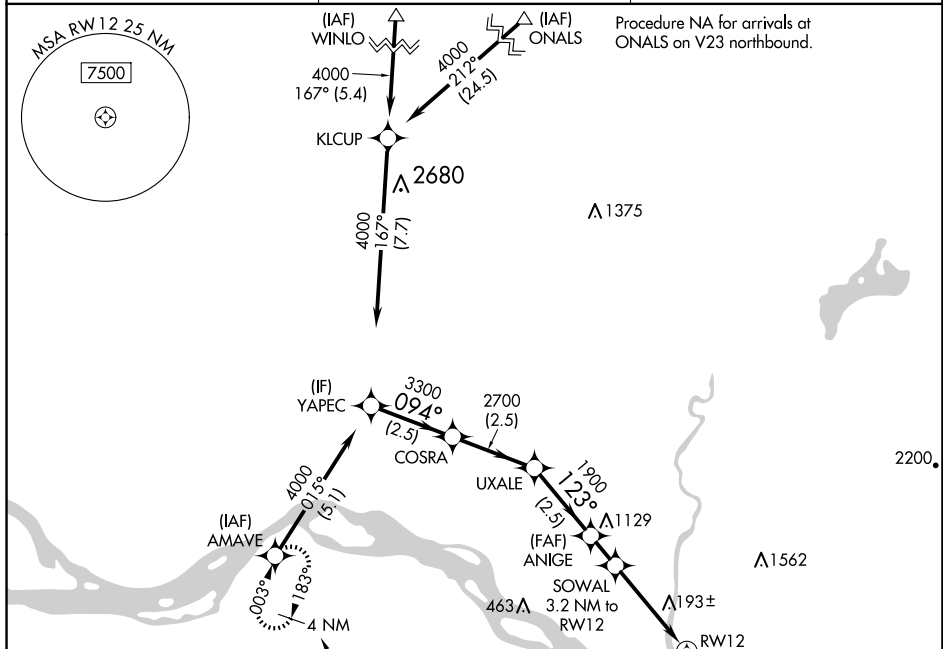
WAAS CH 65743 W12A	APP CRS 123°	Rwy Idg TDZE Apt Elev	4391 20 20
--	------------------------	-----------------------------	---------------------------------------

RNAV (GPS) RWY 12

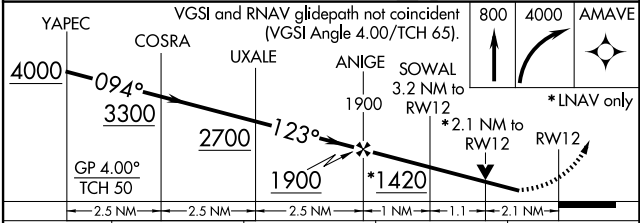
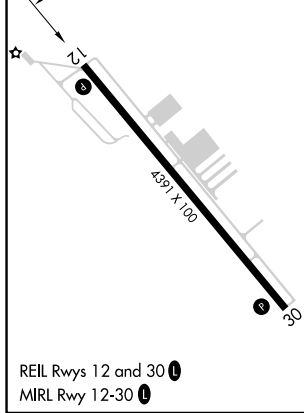
SOUTHWEST WASHINGTON RGNL (KLS)

RNP APCH.	MISSED APPROACH: Climb to 800 then climbing right turn to 4000 direct AMAVE and hold, continue climb-in-hold to 4000.
<p>▼ Circling NA northeast of Rwy 12-30. Circling Rwy 30 NA at night. Rwy 12 helicopter visibility reduction below 3/4 SM NA. For uncompensated Baro-VNAV systems, LNAV/VNAV NA below -6°C or above 54°C.</p>	

AWOS-3PT 135.075	SEATTLE CENTER 124.2 317.6	UNICOM 122.725 (CTAF) 0
----------------------------	--------------------------------------	-----------------------------------



ELEV 20	TDZE 20
---------	---------



CATEGORY	A	B	C	D
LPV DA	608-1 ³ / ₄	588 (600-1 ³ / ₄)		NA
LNAV/VNAV DA	766-2	746 (800-2)		NA
LNAV MDA	980-1 ¹ / ₂ 960 (1000-1 ¹ / ₂)	980-1 ¹ / ₂ 960 (1000-1 ¹ / ₂)		NA
CIRCLING	980-1 ¹ / ₂ 960 (1000-1 ¹ / ₂)	980-1 ¹ / ₂ 960 (1000-1 ¹ / ₂)		NA

NW-1, 23 JAN 2025 to 20 FEB 2025

NW-1, 23 JAN 2025 to 20 FEB 2025