

VORTAC FBC 108.2 Chan 19	APP CRS 233°	Rwy Idg TDZE Apt Elev 4126 850 851
---------------------------------------	------------------------	--

VOR RWY 23

BLUFFTON (5G7)

▽ Use Findlay altimeter setting; when not received, use Lima altimeter setting and increase all MDA 20 feet, increase S-23 Cat C 1/8 SM and Circling Cat C/D visibility 1/4 SM.

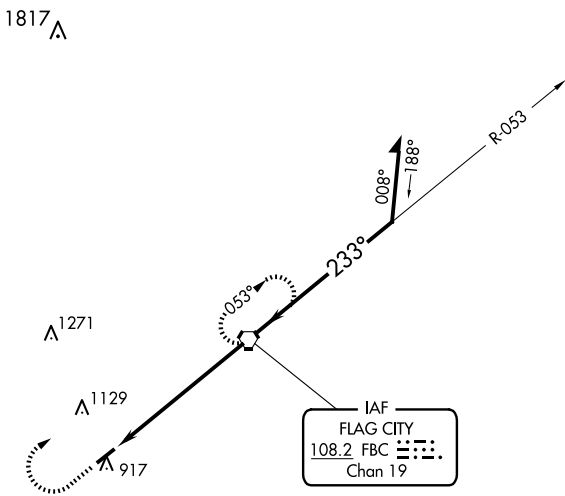
⚠ NA

MISSED APPROACH: Climb to 2500 then right turn direct FBC VORTAC and hold.

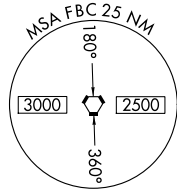
FDY ASOS
132.85

TOLEDO APP CON
120.8 317.55

UNICOM
122.8 (CTAF) 0



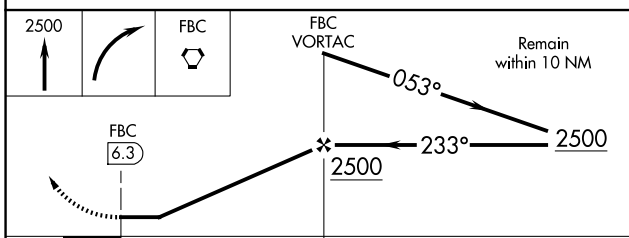
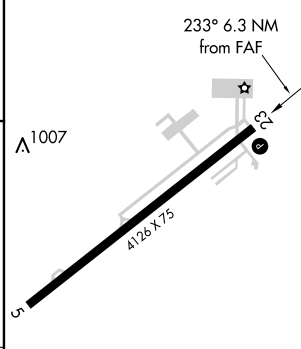
IAF
FLAG CITY
108.2 FBC
Chan 19



EC-2, 23 JAN 2025 to 20 FEB 2025

EC-2, 23 JAN 2025 to 20 FEB 2025

ELEV 851	TDZE 850
----------	----------



CATEGORY	A	B	C	D
S-23	1360-1 510 (600-1)	1360-1 510 (600-1)	1360-1 1/8 510 (600-1 3/8)	1360-1 1/2 510 (600-1 1/2)
C CIRCLING	1360-1 509 (600-1)	1520-1 669 (700-1)	1520-1 3/4 669 (700-1 3/4)	1520-2 669 (700-2)

REIL Rwy 5 and 23 0
MIRL Rwy 5-23 0

FAF to MAP 6.3 NM

Knots	60	90	120	150	180
Min:Sec	6:18	4:12	3:09	2:31	2:06