

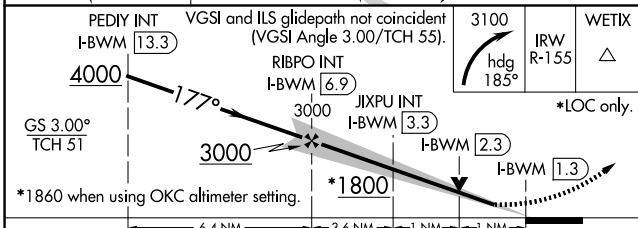
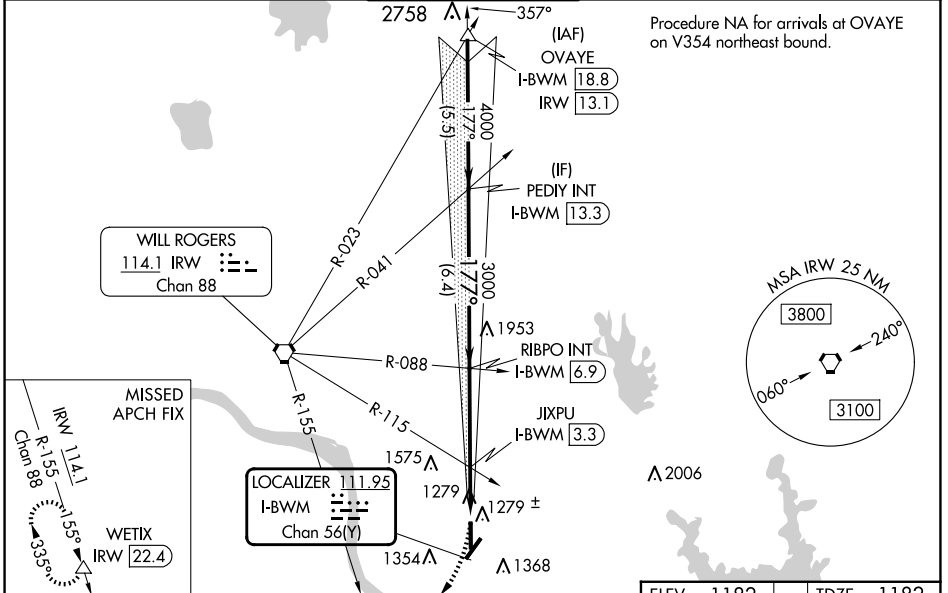
| | | |
|--|------------------------|---|
| LOC/DME I-BWMM 111.95 Chan 56(Y) | APP CRS 177° | Rwy Idg 5199 TDZE 1182 Apt Elev 1182 |
|--|------------------------|---|

ILS or LOC RWY 18

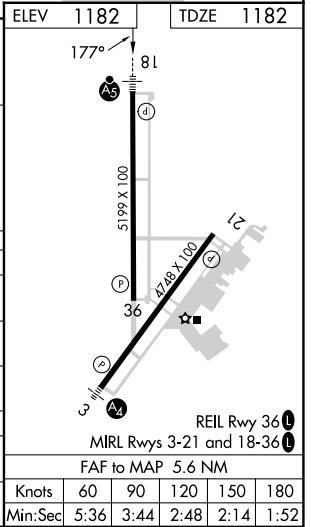
UNIVERSITY OF OKLAHOMA WESTHEIMER (OUN)

| | | |
|---|-------|--|
| DME required. | MALSR | MISSED APPROACH: Climbing right turn to 3100 on heading 185° and IRW VORTAC R-155 to WETIX/IRW VORTAC 22.4 DME and hold. |
| <p>▼ Circling NA southeast of Rwy 3-21. VDP NA when using OKC altimeter setting.</p> <p>▲ When local altimeter setting not received, use OKC altimeter setting; increase S-ILS 18 DA to 1423 feet; increase all MDAs 60 feet, S-LOC 18 visibility Cats C and D ½ SM, and Circling visibility Cats C and D ¼ SM; increase JIXPU fix minimums S-LOC 18 visibility Cats C and D ½ SM, and Circling visibility Cats C and D ¼ SM.</p> | | |

| | | | | |
|---------------------------|---|--|-------------------------|-------------------------|
| AWOS-3PT 119.55 | OKE CITY APP CON 120.45 288.325 | WESTHEIMER TOWER★ 118.0 (CTAF) 0 | GND CON 121.6 | UNICOM 122.95 |
|---------------------------|---|--|-------------------------|-------------------------|



| CATEGORY | A | B | C | D |
|---|--------|-------------|-------------|---------------|
| S-ILS 18 | | 1382-½ | 200 (200-½) | |
| S-LOC 18 | 1800-½ | 618 (700-½) | 1800-1¾ | 618 (700-1¾) |
| C CIRCLING | 1800-1 | 618 (700-1) | 1940-2¼ | 1940-2½ |
| JIXPU FIX MINIMUMS (DUAL VOR RECEIVERS OR DME REQUIRED) | | | | |
| S-LOC 18 | 1540-½ | 358 (400-½) | 1540-5/8 | 358 (400-5/8) |
| C CIRCLING | 1660-1 | 478 (500-1) | 1940-2¼ | 1940-2½ |



SC-1, 23 JAN 2025 to 20 FEB 2025

SC-1, 23 JAN 2025 to 20 FEB 2025