

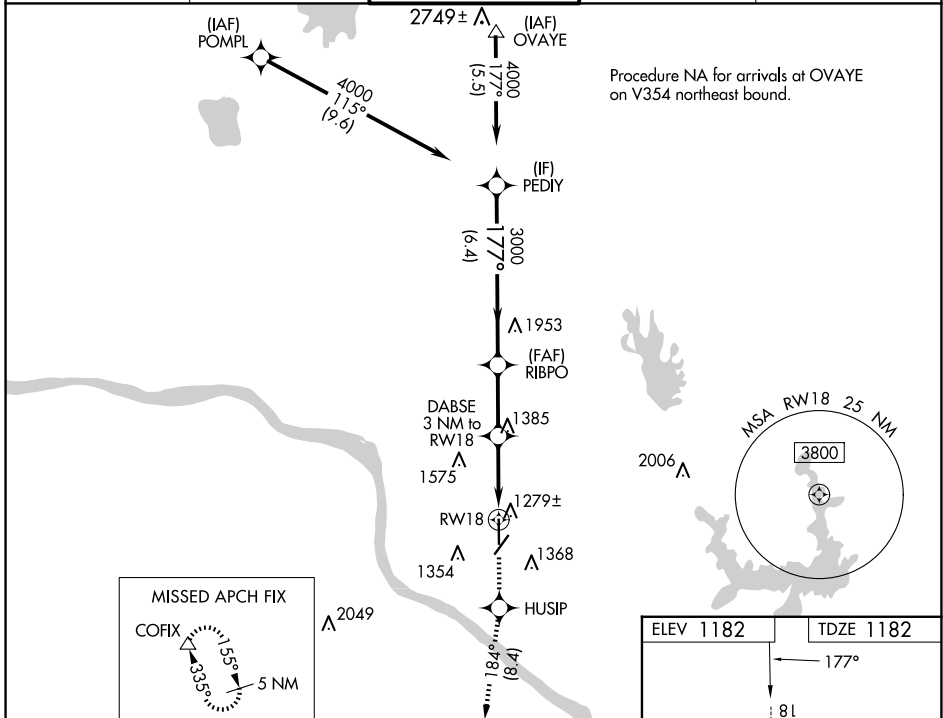
WAAS CH 58302 W18A	APP CRS 177°	Rwy Idg TDZE 1182 Apt Elev 1182	5199 1182 1182
----------------------------------------	------------------------	-----------------------------------------------------	-------------------------------------------

RNAV (GPS) RWY 18

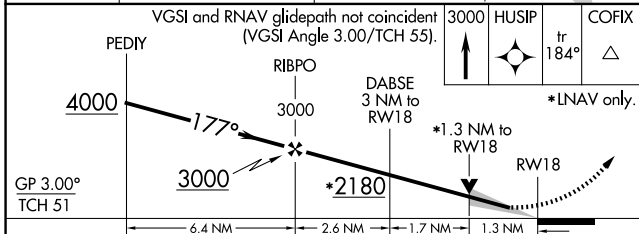
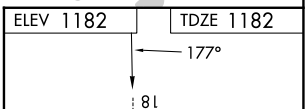
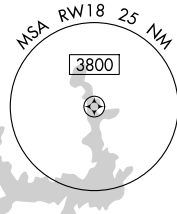
UNIVERSITY OF OKLAHOMA WESTHEIMER (OUN)

RNP APCH.	MALSR 	MISSED APPROACH: Climb to 3000 direct HUSIP and track 184° to COFIX and hold.
<p>▼ For uncompensated Baro-VNAV systems, LNAV/VNAV NA below -17°C or above 54°C. For inop ALS, increase LNAV/VNAV all Cats visibility to 7/8 SM. Circling NA southeast of Rwy 3-21.</p>		

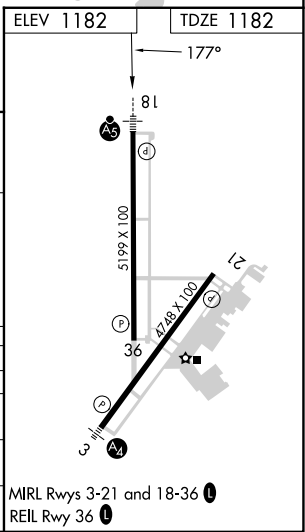
AWOS-3PT 119.55	OKE CITY APP CON 120.45 288.325	WESTHEIMER TOWER ★ 118.0 (CTAF)	GND CON 121.6	UNICOM 122.95
---------------------------	-------------------------------------------	-------------------------------------------	-------------------------	-------------------------



Procedure NA for arrivals at OVAYE on V354 northeast bound.



GP 3.00° TCH 51	*LNAV only.			
CATEGORY	A	B	C	D
LPV DA		1382-1/2	200 (200-1/2)	
LNAV/DA VNAV		1490-1/2	308 (400-1/2)	
LNAV MDA	1640-1/2	458 (500-1/2)	1640-7/8	458 (500-7/8)
CIRCLING	1660-1	478 (500-1)	1940-2 1/4 758 (800-2 1/4)	1940-2 1/2 758 (800-2 1/2)



SC-1, 23 JAN 2025 to 20 FEB 2025

SC-1, 23 JAN 2025 to 20 FEB 2025