

# DENVER TWO DEPARTURE

AL-5715 (FAA)

CENTENNIAL (APA)  
DENVER, COLORADO

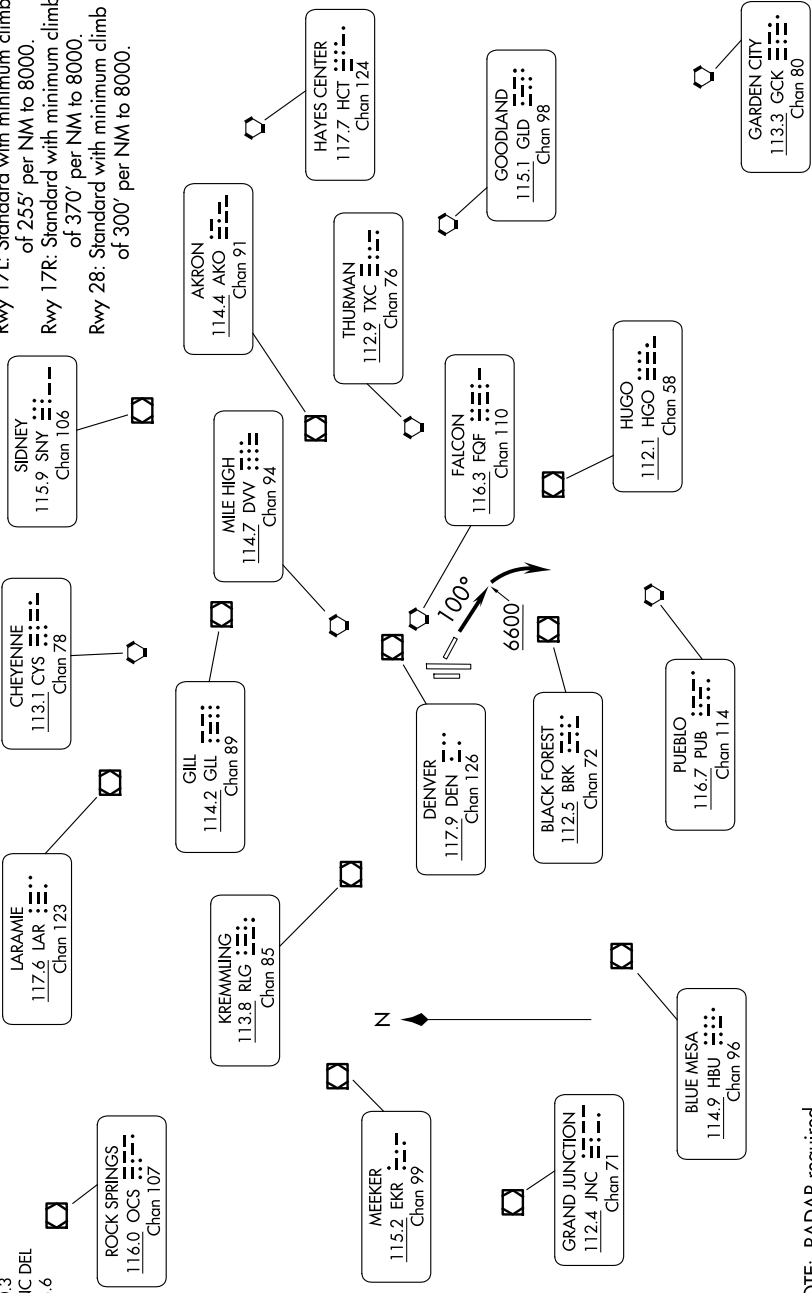
SW-1, 23 JAN 2025 to 20 FEB 2025

## TOP ALTITUDE: ASSIGNED BY ATC

DENVER DEP CON  
132.75 269.3  
ATIS  
120.3  
CLNC DEL  
128.6

## TAKEOFF MINIMUMS:

Rwy 10, 35L/R: Standard.  
Rwy 17L: Standard with minimum climb of 255' per NM to 8000.  
Rwy 17R: Standard with minimum climb of 370' per NM to 8000.  
Rwy 28: Standard with minimum climb of 300' per NM to 8000.



(CONTINUED ON FOLLOWING PAGE)

NOTE: RADAR required.  
NOTE: Chart not to scale.

# DENVER TWO DEPARTURE

30JAN20

DENVER, COLORADO  
CENTENNIAL (APA)

SW-1, 23 JAN 2025 to 20 FEB 2025