

KILNS FIVE DEPARTURE (RNAV)

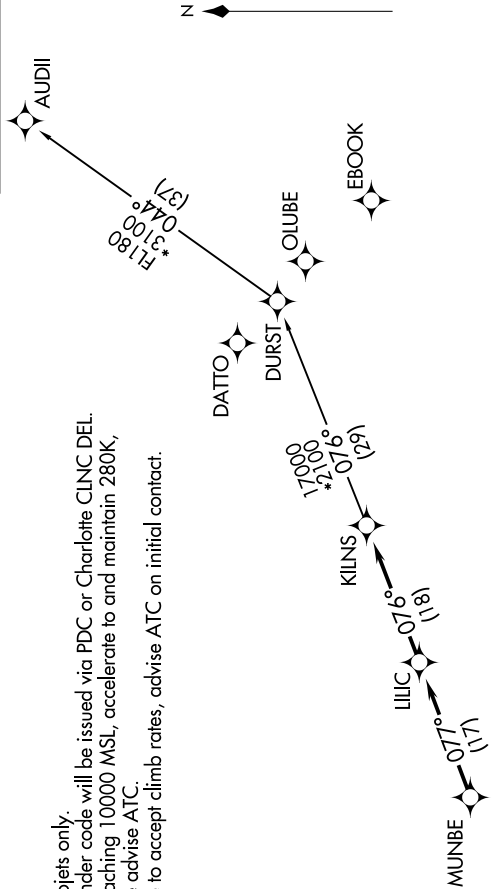
SE-2, 23 JAN 2025 to 20 FEB 2025

CHARLOTTE DEP CON
120.05 307.8
ASOS
135.775
CLNC DEL
132.55
UNICOM (CTAF)
122.7

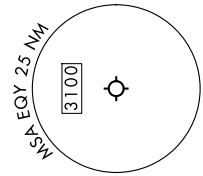
RNAV 1 - DME/DME/IRU or GPS.
RADAR required.

- NOTE: For turboprops only.
- NOTE: Transponder code will be issued via PDC or Charlotte CLNC DEL.
- NOTE: Upon reaching 10000 MSL, accelerate to and maintain 280K, if unable advise ATC.
- NOTE: If unable to accept climb rates, advise ATC on initial contact.

TOP ALTITUDE:
3000



TAKEOFF MINIMUMS
Rwys 5, 23: Standard.



NOTE: Chart not to scale.

DEPARTURE ROUTE DESCRIPTION

Climb on heading assigned by ATC, on RADAR vectors to MUNBE, then on depicted route to KILNS, then on AUDII Transition. Maintain 3000. Expect clearance to filed altitude within 10 minutes after departure.

AUDII TRANSITION (KILNS5:AUDII)

KILNS FIVE DEPARTURE (RNAV)

SE-2, 23 JAN 2025 to 20 FEB 2025