

LOC I-AIZ 111.5	APP CRS 217°	Rwy Idg 6497
		TDZE 869
		Apt Elev 869

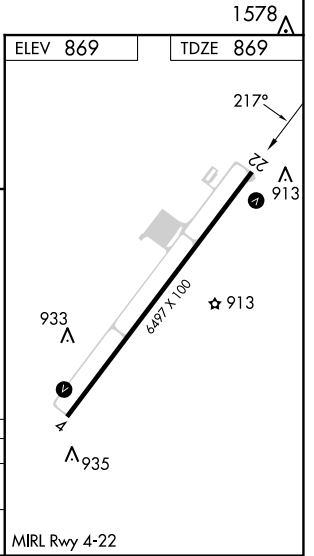
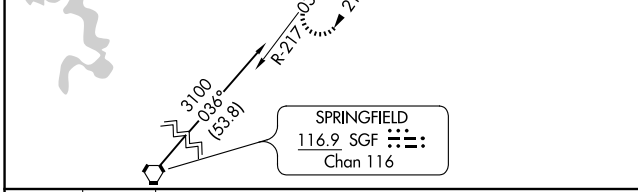
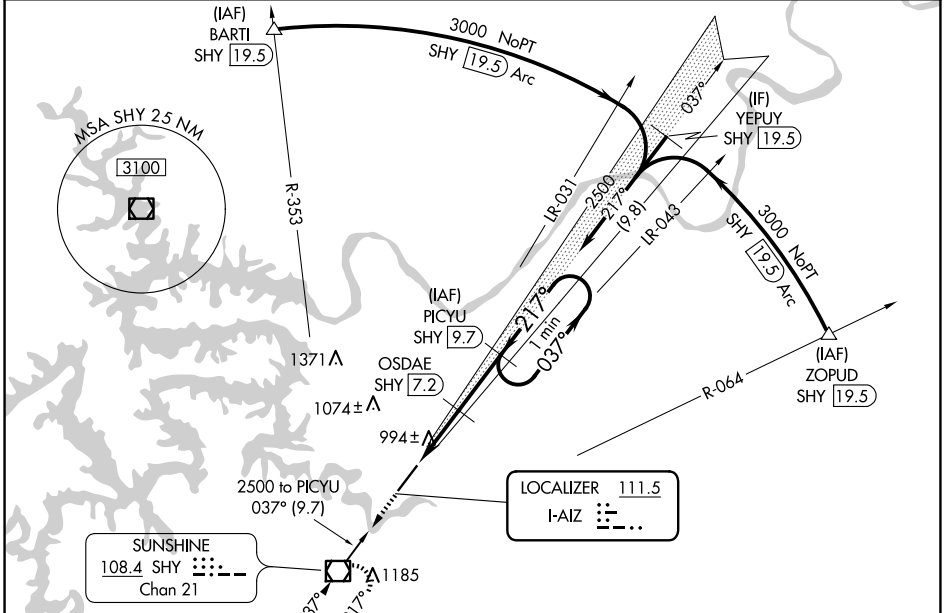
LOC/DME RWY 22

LEE C FINE MEML (AIZ)

NA When local altimeter setting not received, use Camden ton altimeter setting and increase all MDAs 60 feet, increase S-22 Cat C and Circling Cat C visibility ¼ SM. Helicopter visibility reduction below 1 SM NA. DME from SHY VOR/DME. Simultaneous reception of I-AIZ and SHY VOR/DME required.

MISSED APPROACH: Climb to 3100 direct SHY VOR/DME and hold, continue climb-in-hold to 3100.

AWOS-3PT 135.325	MIZZU APP CON 124.1 353.925	UNICOM 122.8 (CTAF) 0
----------------------------	---------------------------------------	---------------------------------



3100 SHY	PICYU SHY 9.7	OSDAE SHY 7.2	2500
SHY 4.7	217°	037°	217°
2.5 NM	2.5 NM		

CATEGORY	A	B	C	D
S-22	1260-1	391 (400-1)	1260-1½ 391 (400-1½)	NA
CIRCLING	1320-1 451 (500-1)	1380-1 511 (600-1)	1440-1½ 571 (600-1½)	NA

NC-3, 23 JAN 2025 to 20 FEB 2025

NC-3, 23 JAN 2025 to 20 FEB 2025