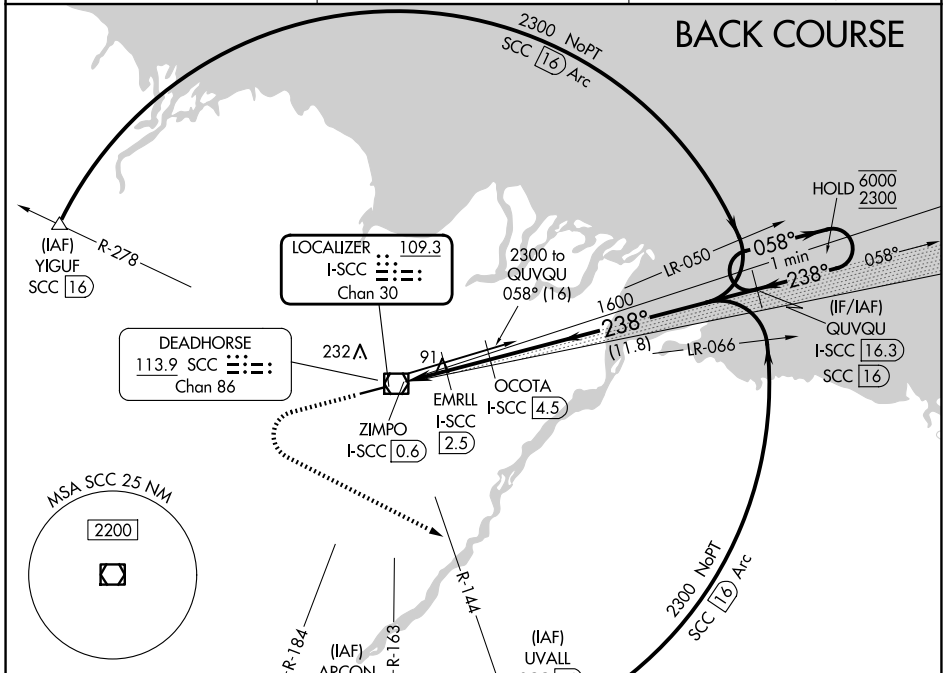


LOC/DME I-SCC 109.3 Chan 30	APP CRS 238°	Rwy Idg TDZE 66 Apt Elev 67
--	------------------------	---

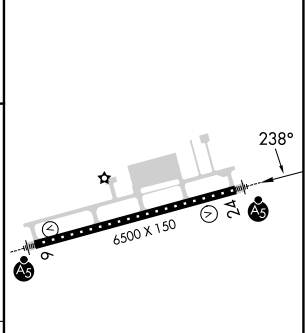
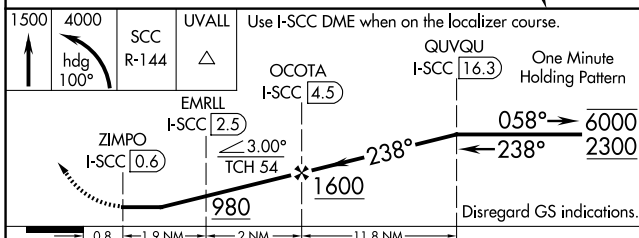
LOC BC RWY 24 DEADHORSE (SCC) (PASC)

DME required.	MALSRL	MISSED APPROACH: Climb to 1500 then climbing left turn to 4000 on heading 100° and SCC VOR/DME R-144 to UVALL/SCC VOR/DME 16 DME and hold. *Missed approach requires minimum climb of 243 feet per NM to 780.
---------------	--------	--

AFIS 118.4	ANCHORAGE CENTER 134.4 370.9	DEADHORSE RADIO 123.6 (CTAF) 0
----------------------	--	--



ELEV 67	TDZE 66
---------	---------



CATEGORY	A	B	C	D	E
S-LOC 24*	360/24 294 (300-½)				
S-LOC 24	420/24	354 (400-½)	420/30	354 (400-¾)	
CIRCLING	540-1	473 (500-1)	580-1½ 513 (600-1½)	620-2	553 (600-2)

HIRL Rwy 6-24 0

AK, 26 DEC 2024 to 20 FEB 2025

AK, 26 DEC 2024 to 20 FEB 2025