

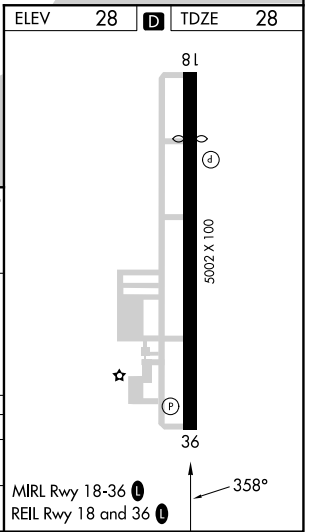
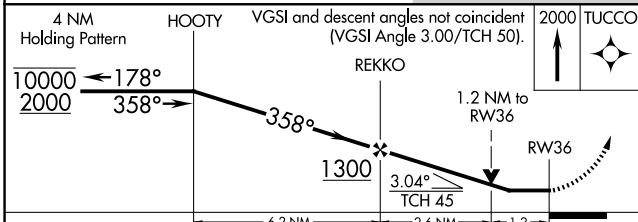
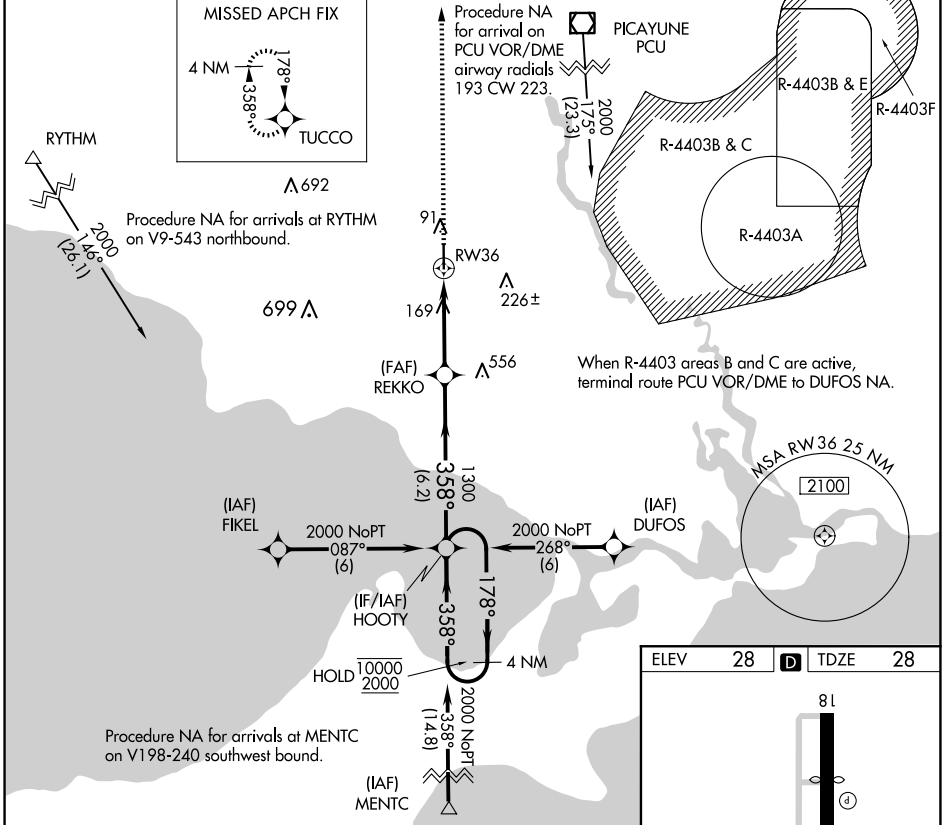
APP CRS	Rwy Ldg	<b>5001</b>
<b>358°</b>	TDZE	<b>28</b>
	Apt Elev	<b>28</b>

# RNAV (GPS) RWY 36

SLIDELL (ASD)

RNP APCH.	MISSED APPROACH: Climb to 2000 direct TUCCO and hold.
Rwy 36 helicopter visibility reduction below 3/4 SM NA.	

ASOS <b>132.475</b>	NEW ORLEANS APP CON <b>133.15 290.3</b>	UNICOM <b>122.8 (CTAF)</b>	GCO <b>135.075</b>
------------------------	--	-------------------------------	-----------------------



CATEGORY	A	B	C	D
LNVA MDA	460-1	432 (500-1)	460-1¼ 432 (500-1¼)	NA
CIRCLING	480-1	452 (500-1)	520-1½ 492 (500-1½)	NA

SC-4, 23 JAN 2025 to 20 FEB 2025

SC-4, 23 JAN 2025 to 20 FEB 2025