

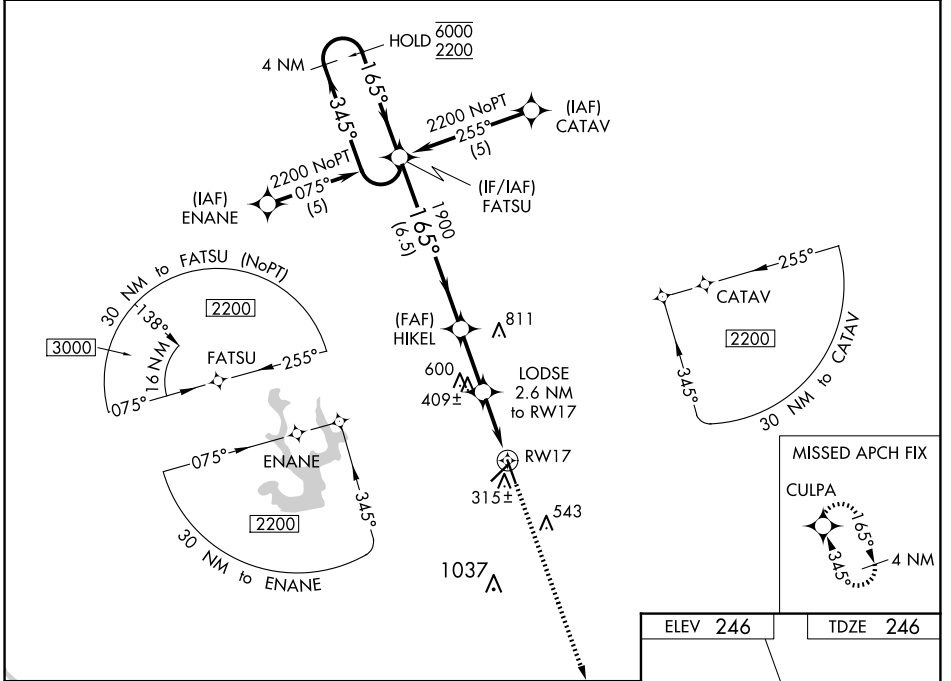
WAAS CH 90418 W17A	APP CRS 165°	Rwy Idg TDZE Apt Elev	5119 246 246
--	------------------------	-----------------------------	---

RNAV (GPS) RWY 17

BARNWELL RGNL (BNL)

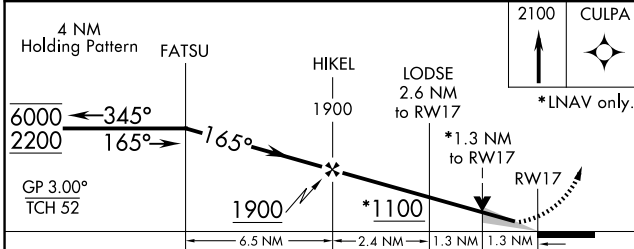
RNP APCH.	ODALS	MISSED APPROACH: Climb to 2100 direct CULPA and hold.
<p>⚠ Circling Rwy 5, 23 NA at night. Inop table does not apply to LPV, LNAV/VNAV all Cats, and LNAV Cat C. For uncompensated Baro-VNAV systems, LNAV/VNAV NA below -15°C or above 54°C.</p>		

AWOS-3 119.775	JACKSONVILLE CENTER 132.925 363.2	GCO 121.725	UNICOM 122.8 (CTAF) 📻
--------------------------	---	-----------------------	--

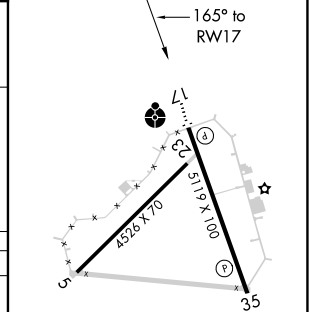


SE-2, 23 JAN 2025 to 20 FEB 2025

SE-2, 23 JAN 2025 to 20 FEB 2025



ELEV 246	TDZE 246
----------	----------



CATEGORY	A	B	C	D
LPV DA		496-3/4	250 (300-3/4)	
LNAV/VNAV DA		604-1 1/4	358 (400-1 1/4)	
LNAV MDA	700-3/4	454 (500-3/4)	700-1 1/4 454 (500-1 1/4)	700-1 1/2 454 (500-1 1/2)
CIRCLING	700-1	454 (500-1)	900-1 1/4 654 (700-1 1/4)	900-2 654 (700-2)

REIL Rwy 17
MIRL Rwy 17-35 **📻**