

(BLTWY7.BLTWY) 21280

AL-5824 (FAA)

BAY CITY RGNL (BYY)

BLTWY SEVEN DEPARTURE (RNAV)

BAY CITY, TEXAS

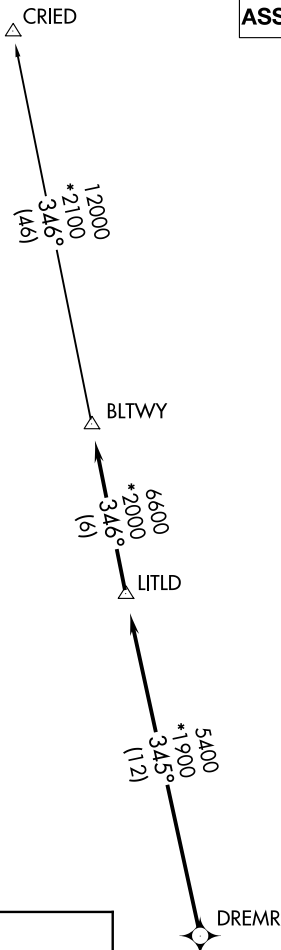
CTAF
122.8
HOUSTON DEP CON
128.6 360.85

**TOP ALTITUDE:
ASSIGNED BY ATC**

NOTE: RADAR required.
NOTE: DME/DME/IRU or GPS required.
NOTE: RNAV 1.

TAKEOFF MINIMUMS

Rwys 13, 31: Standard with minimum
climb of 500' per NM to 560.

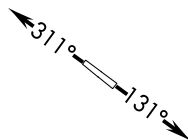


DEPARTURE ROUTE DESCRIPTION

TAKEOFF RUNWAY 13: Climb on heading 131° or as assigned by ATC for RADAR vectors to DREMR, thence . . .
TAKEOFF RUNWAY 31: Climb on heading 311° or as assigned by ATC for RADAR vectors to DREMR, thence . . .

...on track 345° to LITLD, then on track 346° to BLTWY, then on (transition). Maintain ATC assigned altitude. Expect filed altitude 10 minutes after departure.

CRIED TRANSITION (BLTWY7.CRIED)



NOTE: Chart not to scale.

SC-5, 23 JAN 2025 to 20 FEB 2025

SC-5, 23 JAN 2025 to 20 FEB 2025

BLTWY SEVEN DEPARTURE (RNAV)

(BLTWY7.BLTWY) 07OCT21

BAY CITY, TEXAS

BAY CITY RGNL (BYY)