

WAAS CH 78326 W31A	APP CRS 311°	Rwy Idg 5107 TDZE 44 Apt Elev 45
--	------------------------	---

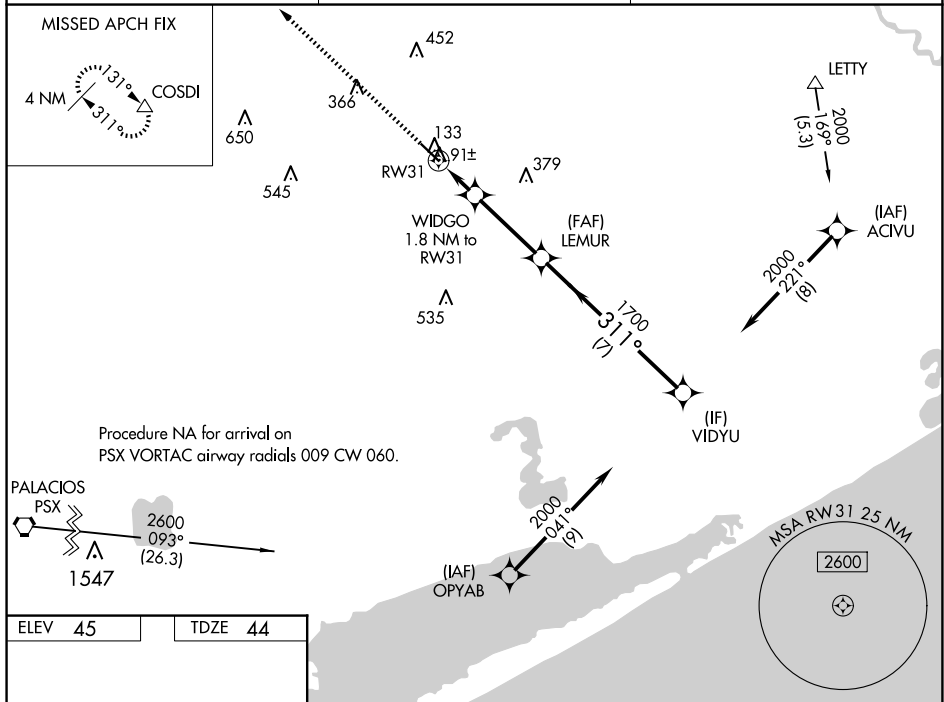
RNAV (GPS) RWY 31

BAY CITY RGNL (BYY)

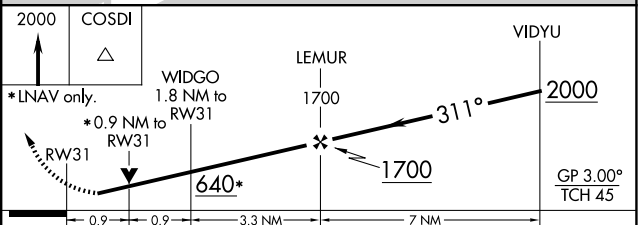
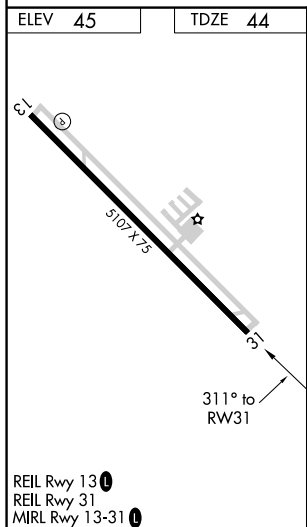
⚠ For uncompensated Baro-VNAV systems, LNAV/VNAV NA below -15°C (5°F) or above 54°C (130°F). Rwy 13, 31 helicopter visibility reduction below 1 SM NA. **⚠** DME/DME RNP-0.3 NA. When local altimeter setting not received, use Palacios altimeter setting and increase all DA 63 feet and all MDA 80 feet; increase LNAV visibility Cat C ¼ mile. VDP and Baro-VNAV N/A when using Palacios altimeter setting.

MISSED APPROACH: Climb to 2000 direct COSDI and hold.

AWOS-3 118.075	HOUSTON CENTER 128.6 360.8	UNICOM 122.8 (CTAF) 0
--------------------------	--------------------------------------	---------------------------------



Procedure NA for arrival on PSX VORTAC airway radials 009 CW 060.



CATEGORY	A	B	C	D
LPV DA		294-1 250 (300-1)		NA
LNAV/VNAV DA		294-1 250 (300-1)		NA
LNAV MDA		360-1 316 (400-1)		NA
C CIRCLING	500-1	455 (500-1)	620-1½ 575 (600-1½)	NA

SC-5, 23 JAN 2025 to 20 FEB 2025

SC-5, 23 JAN 2025 to 20 FEB 2025