

VORTAC LAL <b>116.0</b> Chan <b>107</b>	APP CRS <b>101°</b>	Rwy Idg <b>5000</b> TDZE <b>125</b> Apt Elev <b>125</b>
---	------------------------	---

# VOR RWY 9L

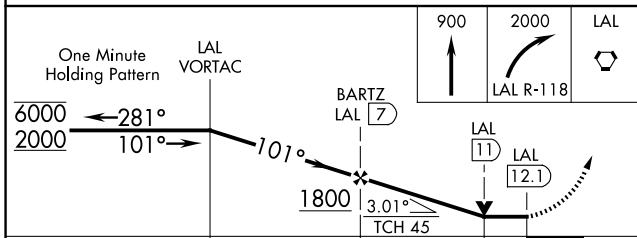
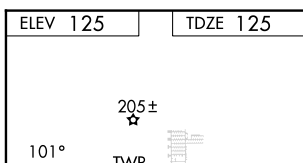
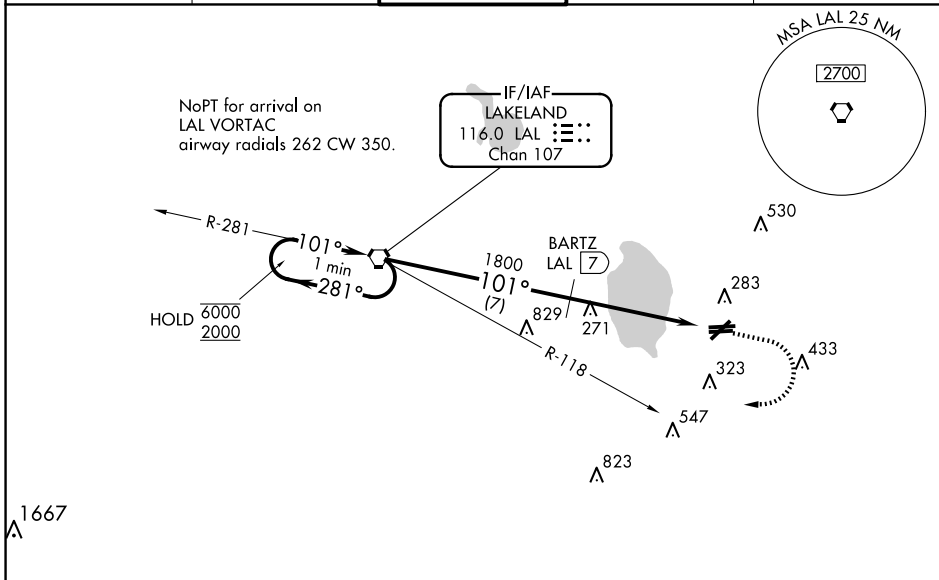
BARTOW EXEC (BOW)

DME required.

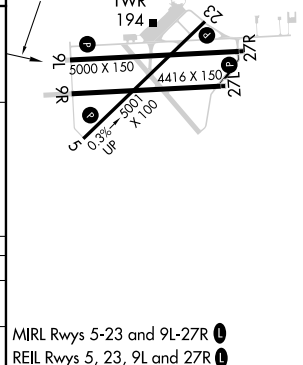
**⚠** Circling Rwy 9R, 27L NA at night. Rwy 9L helicopter visibility reduction below 3/4 SM NA. When local altimeter setting not received, use Tampa Intl altimeter setting; increase all MDA 120 feet, increase S-9L Cat C/D visibility 3/8 SM and Circling Cat C/D visibility 1/2 SM. VDP NA when using Tampa Intl altimeter setting.

**MISSED APPROACH:** Climb to 900 then climbing right turn to 2000 on LAL VORTAC R-118 to LAL VORTAC and hold.

AWOS-3 <b>123.775</b>	TAMPA APP CON <b>120.65 290.3</b>	<b>BARTOW TOWER ★</b> <b>121.20</b> (CTAF)	GND CON <b>121.9</b>	UNICOM <b>122.95</b>
--------------------------	--------------------------------------	---	-------------------------	-------------------------



CATEGORY	A	B	C	D
S-9L	540-1	415 (500-1)	540-1 1/8	415 (500-1 1/8)
CIRCLING	600-1 475 (500-1)	680-1 555 (600-1)	680-1 1/2 555 (600-1 1/2)	840-2 1/4 715 (800-2 1/4)



SE-3, 23 JAN 2025 to 20 FEB 2025

SE-3, 23 JAN 2025 to 20 FEB 2025