

RAVENNA, OHIO

AL-5844 (FAA)

24361

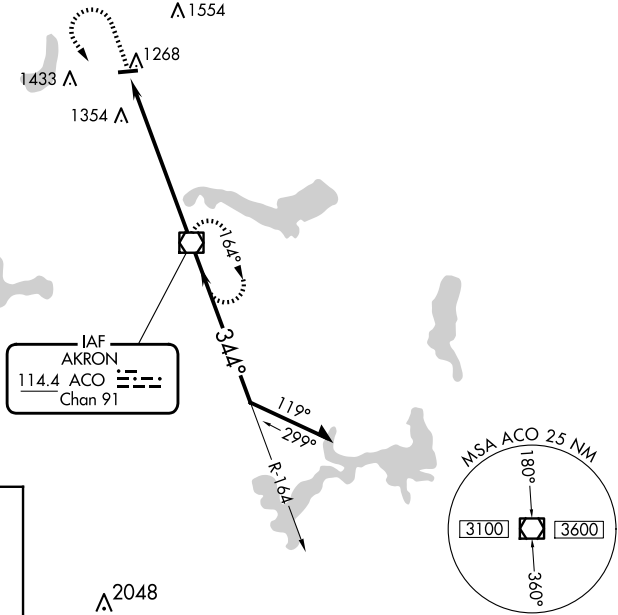
VOR/DME ACO 114.4 Chan 91	APP CRS 344°	Rwy Idg TDZE Apt Elev N/A N/A 1198
-----------------------------------------------	------------------------	------------------------------------------------------------------------

VOR-A
PORTAGE COUNTY (POV)

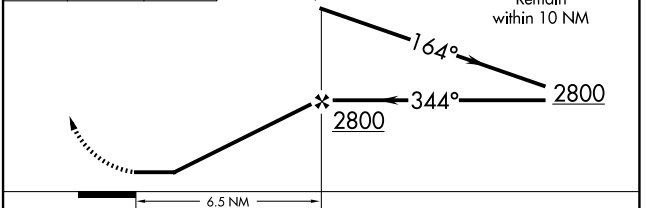
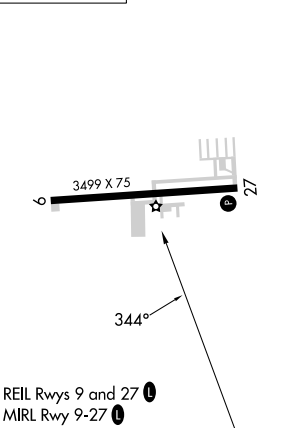
⚠ When local altimeter setting not received, use CAK altimeter setting and increase all MDAs 60 feet and visibility Cat C ¼ SM.

MISSED APPROACH: Climb to 2900 then left turn direct ACO VOR/DME and hold.

AWOS-3 118.675	CLEVELAND APP CON★ 125.5 371.875	CLNC DEL 125.65	UNICOM 123.05 (CTAF) 📞
--------------------------	--------------------------------------------	---------------------------	-----------------------------------------



ELEV 1198



FAF to MAP 6.5 NM						CATEGORY	A	B	C	D
Knots	60	90	120	150	180	☑ CIRCLING	1740-1 542 (600-1)	1800-1 602 (700-1)	1860-1¾ 662 (700-1¾)	NA
Min:Sec	6:30	4:20	3:15	2:36	2:10					

RAVENNA, OHIO
Amdt 7 26DEC24

41°13'N - 81°15'W

PORTAGE COUNTY (POV)
VOR-A

EC-2, 23 JAN 2025 to 20 FEB 2025

EC-2, 23 JAN 2025 to 20 FEB 2025