

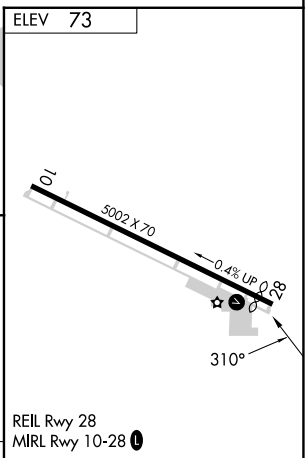
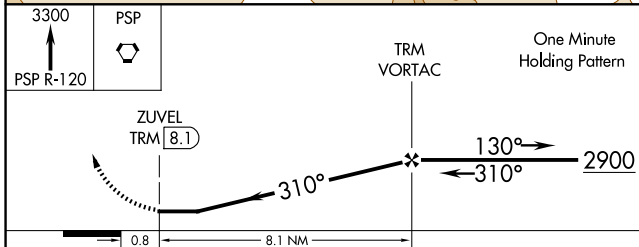
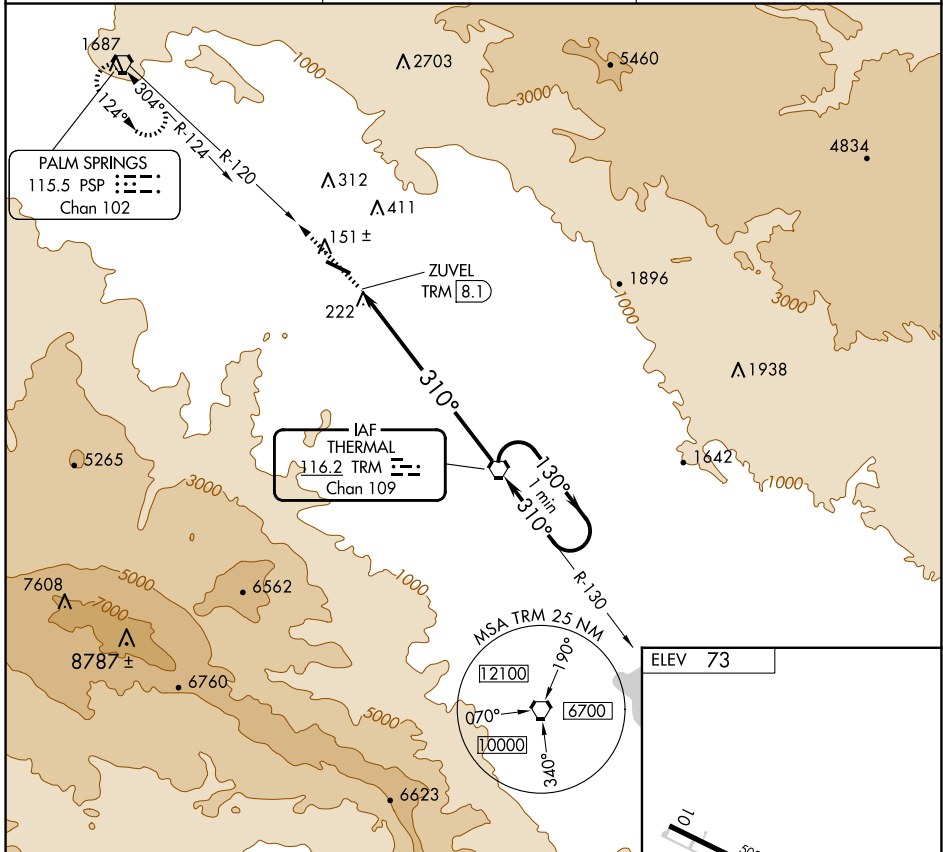
VORTAC TRM 116.2 Chan 109	APP CRS 310°	Rwy Idg TDZE Apt Elev 73	N/A N/A
---	------------------------	--	--------------------------

VOR-C
BERMUDA DUNES (UDD)

Use Jacqueline Cochran Rgnl altimeter setting.
Circling to Rwy 28 NA at night.

MISSED APPROACH: Climb to 3300 via PSP R-120 to PSP VORTAC and hold.

TRM ASOS 118.325	SOCAL APP CON ★ 135.275 251.1	UNICOM 122.8 (CTAF) 0
----------------------------	---	--



CATEGORY	A	B	C	D	FAF to MAP 8.1 NM					
CIRCLING	960-1¼	887 (900-1¼)	1100-3 1027 (1100-3)	NA	Knots	60	90	120	150	180
					Min:Sec	8:06	5:24	4:03	3:14	2:42

SW-3, 23 JAN 2025 to 20 FEB 2025

SW-3, 23 JAN 2025 to 20 FEB 2025