

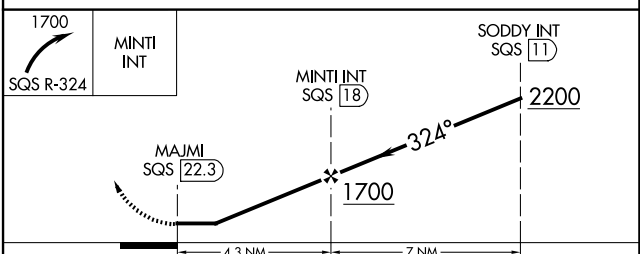
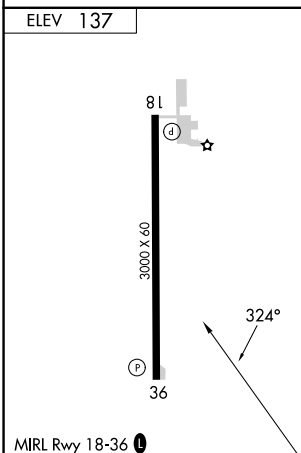
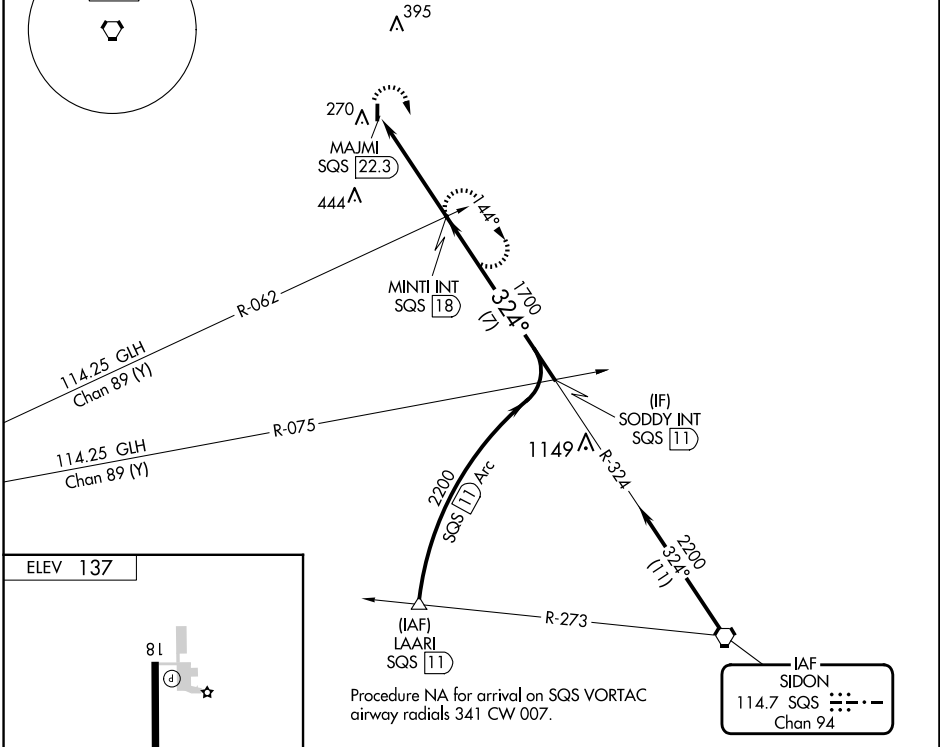
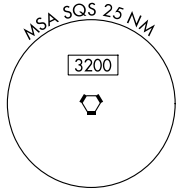
VORTAC SQS <b>114.7</b> Chan <b>94</b>	APP CRS <b>324°</b>	Rwy Idg TDZE Apt Elev	<b>N/A</b> <b>N/A</b> <b>137</b>
--	------------------------	-----------------------------	--

**VOR-A**  
RULEVILLE-DREW (M37)

**▼** Rwy 18 and 36 helicopter visibility reduction below 1 SM NA. Use Cleveland altimeter setting; when not received, use Greenwood altimeter setting and increase all MDAs 40 feet, increase Cat C visibility 1/4 SM. Procedure NA at night.  
**▲ NA** MISSED APPROACH: Climbing right turn to 1700 on SQS VORTAC R-324 to MINTI INT/SQS 18 DME and hold.

MEMPHIS CENTER  
**135.875 269.35**

CTAF  
**122.9**



FAF to MAP 4.3 NM					
Knots	60	90	120	150	180
Min:Sec	4:18	2:52	2:09	1:43	1:26
<b>☑</b> CIRCLING	A 620-1 483 (500-1)		B 720-1 583 (600-1)		C 780-1 <sup>3</sup> / <sub>4</sub> 643 (700-1 <sup>3</sup> / <sub>4</sub> )
	D NA				

SC-4, 23 JAN 2025 to 20 FEB 2025

SC-4, 23 JAN 2025 to 20 FEB 2025