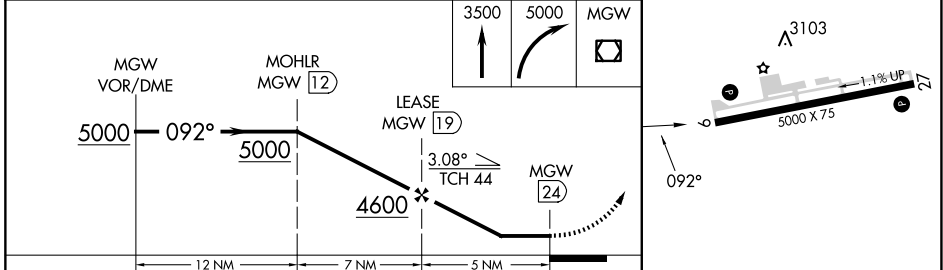
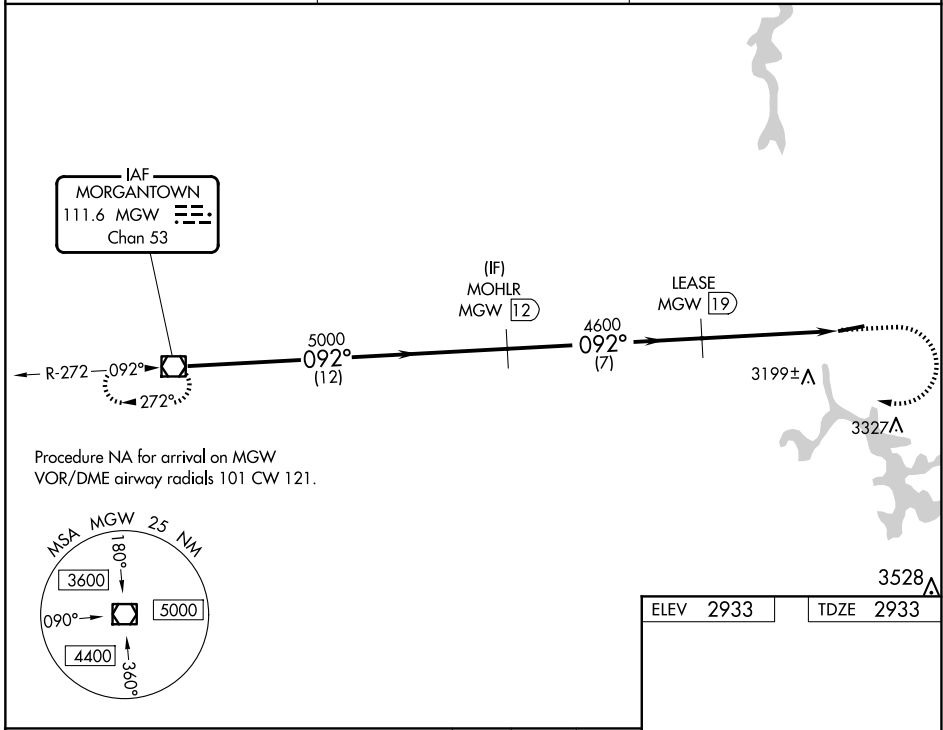


|   |                        |  |
|---|------------------------|--|
| VOR/DME MGW<br><b>111.6</b><br>Chan <b>53</b> | APP CRS<br><b>092°</b> | Rwy Idg<br>TDZE<br>Apt Elev<br><b>5000</b><br><b>2933</b><br><b>2933</b> |
|---|------------------------|--|

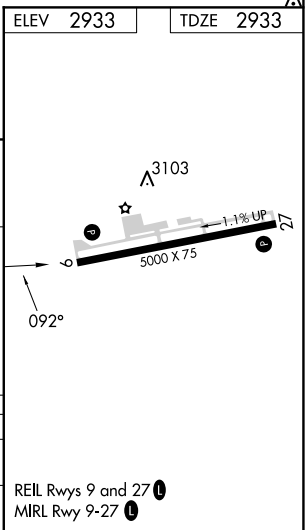
**VOR RWY 9**  
GARRETT COUNTY (2G4)

|  |  |
|--|--|
| DME required.  | MISSED APPROACH: Climb to 3500 then climbing right turn to 5000 direct MGW VOR/DME and hold. |
| <p><b>T</b> Rwy 09 helicopter visibility reduction below <math>\frac{3}{4}</math> SM NA. When local altimeter setting not received, use Morgantown altimeter setting and increase all MDA 300 feet; increase S-09 Cat B and Circling Cat A and B visibility <math>\frac{1}{4}</math> SM and S-09 and Circling Cat C visibility 1 SM.</p> |  |

|                          |   |                                 |
|--------------------------|---|---------------------------------|
| AWOS-3<br><b>120.125</b> | CLARKSBURG APP CON *<br><b>119,425 284,65</b> | UNICOM<br><b>123.0 (CTAF) 0</b> |
|--------------------------|---|---------------------------------|



| CATEGORY          | A      | B           | C                       | D  |
|-------------------|--------|-------------|-------------------------|----|
| S-09              | 3460-1 | 527 (600-1) | 3460-1½<br>527 (600-1½) | NA |
| <b>C</b> CIRCLING | 3460-1 | 527 (600-1) | 3500-1½<br>567 (600-1½) | NA |



NE-3, 23 JAN 2025 to 20 FEB 2025

NE-3, 23 JAN 2025 to 20 FEB 2025