

WAAS CH 65809 W01A	APP CRS 009°	Rwy Idg TDZE Apt Elev	4527 588 588
--	------------------------	-----------------------------	---

RNAV (GPS) RWY 1

LEBANON MUNI (M54)

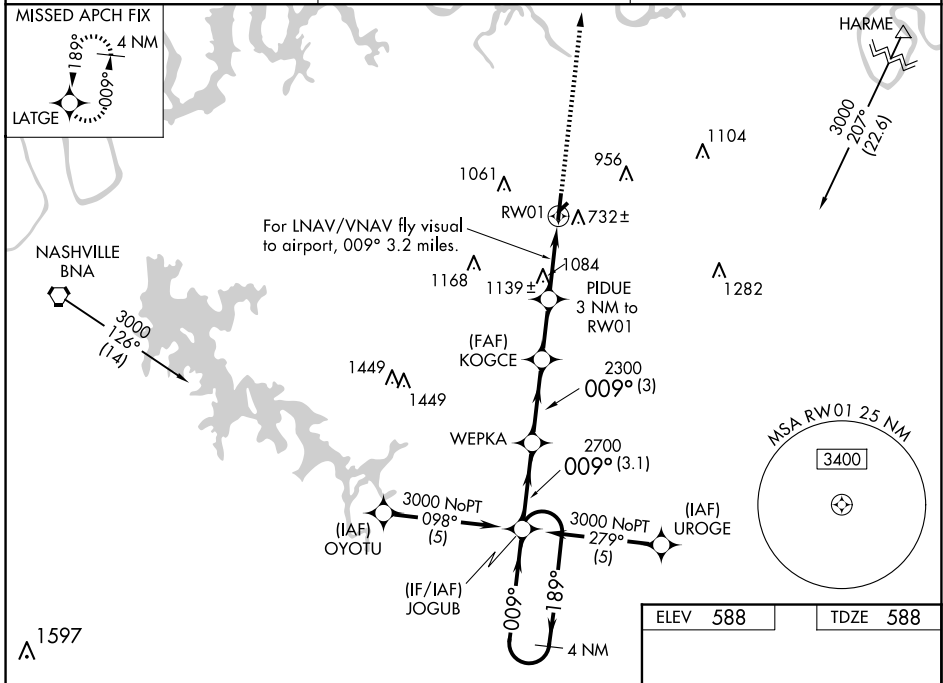
NA For uncompensated Baro-VNAV systems, LNAV/VNAV NA below -16° C (4° F) or above 47° C (116° F). DME/DME RNP-0.3 NA. Visibility reduction by helicopters NA. When local altimeter setting not received, use Nashville Intl altimeter setting: increase LPV DA to 1131 and all Cats visibility ¼ SM; increase all MDA 60 feet and Circling Cat C visibility ¼ SM. LNAV/VNAV NA when using Nashville Intl altimeter setting.

MISSED APPROACH:
Climb to 3000 direct LATGE and hold.

AWOS-3
118.325

NASHVILLE APP CON
118.4 360.7

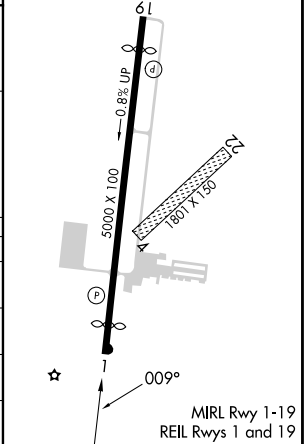
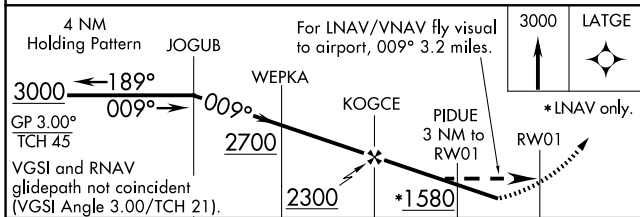
UNICOM
122.725 (CTAF)



SE-1, 23 JAN 2025 to 20 FEB 2025

SE-1, 23 JAN 2025 to 20 FEB 2025

ELEV 588	TDZE 588
-----------------	-----------------



CATEGORY	A	B	C	D
LPV DA	1088-1¾ 500 (500-1¾)			
LNAV/VNAV DA	1663-2	1075 (1100-2)	1663-3	1075 (1100-3)
LNAV MDA	1400-1 812 (900-1)	1400-1¼ 812 (900-1¼)	1400-2½ 812 (900-2½)	1400-2¾ 812 (900-2¾)
CIRCLING	1400-1¼	812 (900-1¼)	1440-2½ 852 (900-2½)	1520-3 932 (1000-3)