

| | | | |
|--|------------------------|-----------------------------|---|
| WAAS CH 90309 W19A | APP CRS 189° | Rwy Idg TDZE Apt Elev | 4500 568 588 |
|--|------------------------|-----------------------------|---|

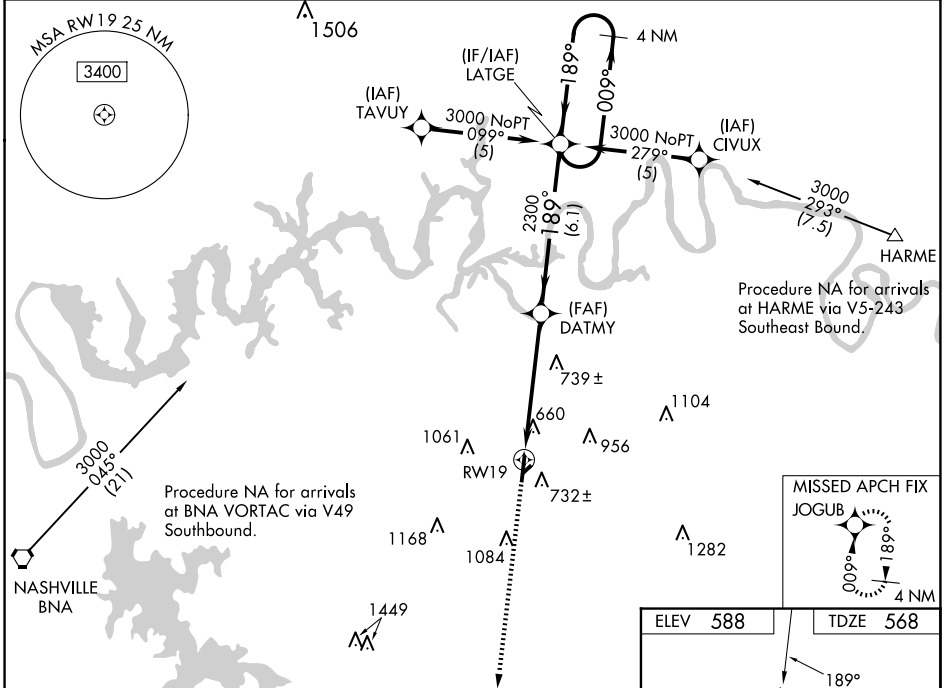
RNAV (GPS) RWY 19

LEBANON MUNI (M54)

Baro-VNAV NA when using Nashville Intl altimeter setting. For uncompensated Baro-VNAV systems, LNAV/VNAV NA below -16° C (4° F) or above 47° C (116° F). DME/DME RNP-0.3 NA. Visibility reduction by helicopters NA. When local altimeter setting not received, use Nashville Intl altimeter setting: increase LPV DA to 942; increase all MDA 60 feet and Circling Cat C visibility ¼ SM.

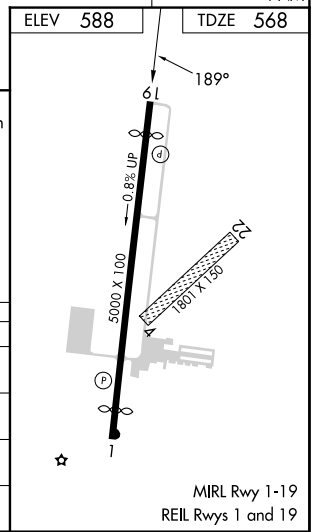
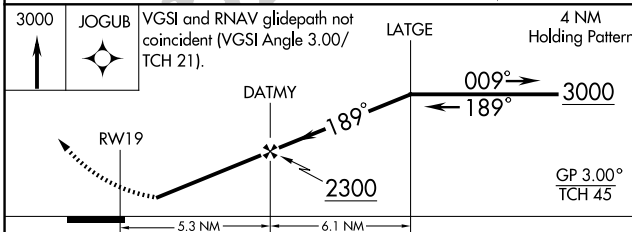
MISSED APPROACH: Climb to 3000 direct JOGUB and hold.

| | | |
|--------------------------|---|---------------------------------|
| AWOS-3 118.325 | NASHVILLE APP CON 118.4 360.7 | UNICOM 122.725 (CTAF) |
|--------------------------|---|---------------------------------|



SE-1, 23 JAN 2025 to 20 FEB 2025

SE-1, 23 JAN 2025 to 20 FEB 2025



| CATEGORY | A | B | C | D |
|--------------|-----------------------|-----------------------|-------------------------|-------------------------|
| LPV DA | 899-1¼ | | 331 (400-1¼) | |
| LNAV/VNAV DA | 996-1½ | | 428 (500-1½) | |
| LNAV MDA | 1000-1 | 432 (500-1) | 1000-1¼ 432 (500-1¼) | 1000-1½ 432 (500-1½) |
| CIRCLING | 1100-1 512 (600-1) | 1200-1 612 (700-1) | 1440-2½ 852 (900-2½) | 1520-3 932 (1000-3) |