

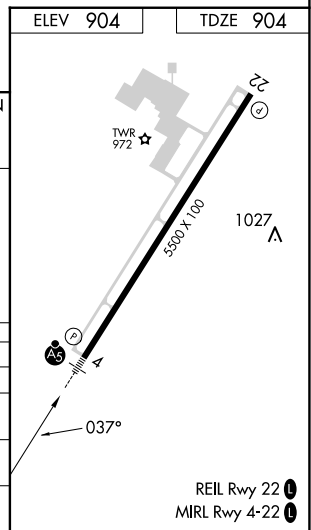
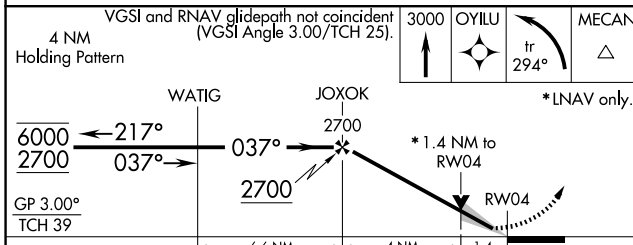
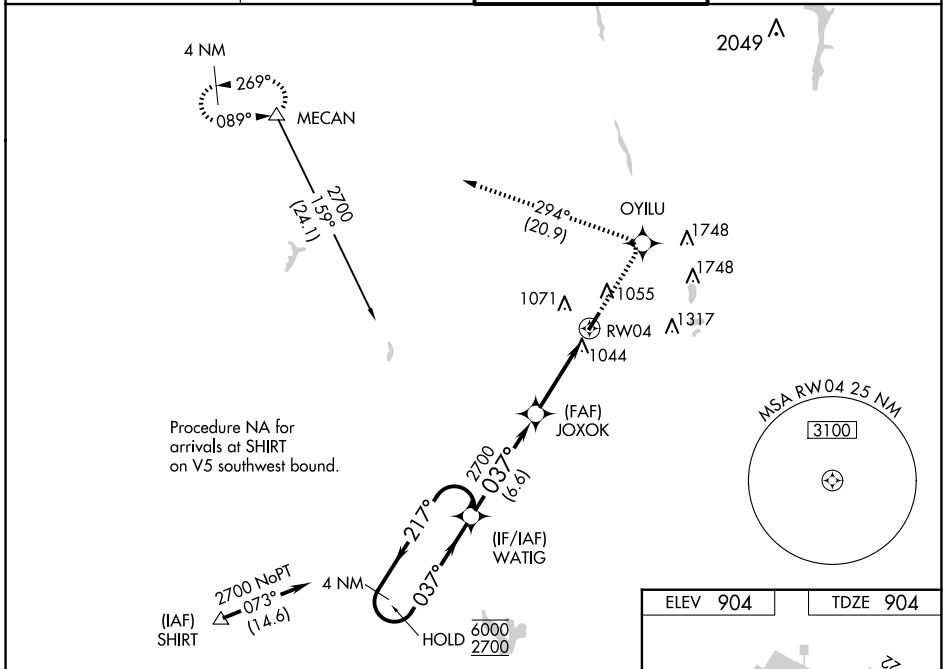
WAAS CH 90505 W04A	APP CRS 037°	Rwy Idg TDZE Apt Elev	5500 904 904
--	------------------------	-----------------------------	---

RNAV (GPS) RWY 4

BOLTON FLD (TZR)

RNP APCH.	MALSR	MISSED APPROACH: Climb to 3000 direct OYILU and left turn on track 294° to MECAN and hold.
<p>▼ For uncompensated Baro-VNAV systems, LNAV/VNAV NA below -16°C or above 54°C. For inop ALS, increase LNAV/VNAV all Cats visibility to 1¼ SM and LNAV Cats C/D visibility to 1½ SM.</p>		

AWOS-3PT 135.925	COLUMBUS APP CON 134.0 279.6	BOLTON TOWER ★ 128.1 (CTAF) 0	GND CON 121.8
----------------------------	--	---	-------------------------



CATEGORY	A	B	C	D
LPV DA	1163-½ 259 (300-½)			
LNAV/VNAV DA	1325-1 421 (500-1)			
LNAV MDA	1360-½ 456 (500-½)	1360-7/8 456 (500-7/8)	1360-1 456 (500-1)	1360-1 456 (500-1)
CIRCLING	1360-1 456 (500-1)	1380-1 476 (500-1)	1380-1½ 476 (500-1½)	1500-2 596 (600-2)

EC-2, 23 JAN 2025 to 20 FEB 2025

EC-2, 23 JAN 2025 to 20 FEB 2025