

APP CRS **091°**
 Rwy Idg **4000**
 TDZE **434**
 Apt Elev **434**

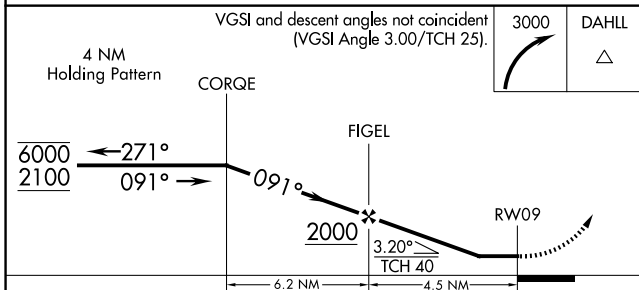
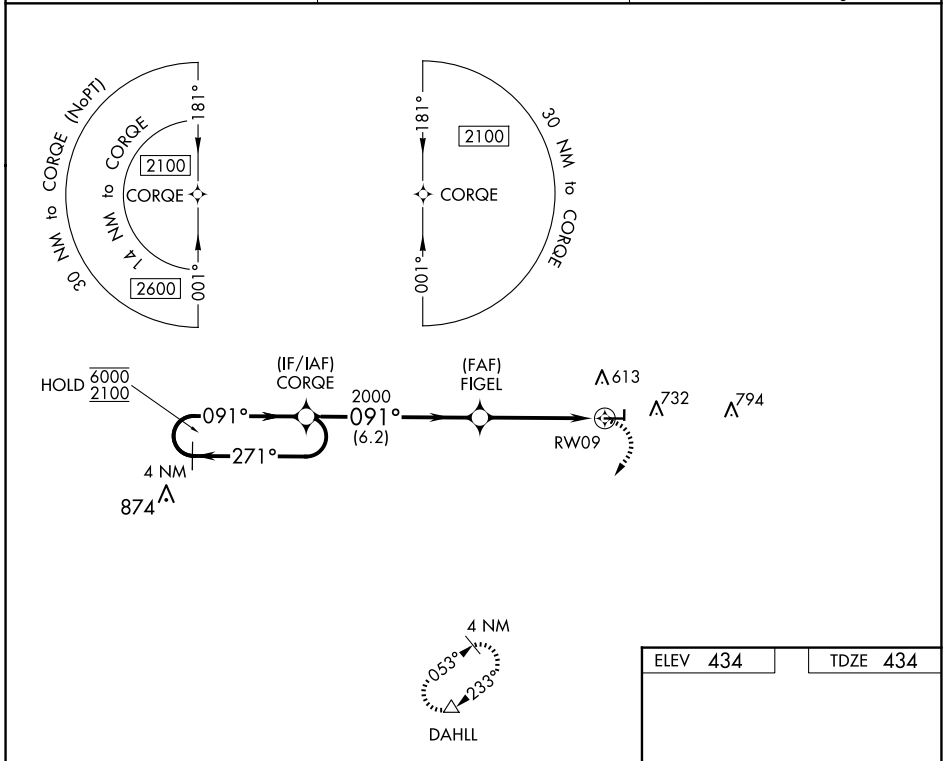
RNAV (GPS) RWY 9

FAIRFIELD MUNI (FWC)

RNP APCH. MISSED APPROACH: Climbing right turn to 3000 direct DAHLL and hold.

▼ Rwy 9 helicopter visibility reduction below 1 SM NA.
 Straight-in Rwy 9 NA at night, Circling Rwy 9, 27, 36 NA at night.

AWOS-3PT 119.425	KANSAS CITY CENTER 127.7 351.825	UNICOM 123.05 (CTAF) 0
----------------------------	--	----------------------------------



ELEV 434	TDZE 434
----------	----------

Profile details: The descent starts at 4000 ft. The descent angle is 0.5% UP. The distance from the start of the descent to RWY 9 is 4000 X 75. The runway width is 36 ft. The DAHLL is 3000 ft. The distance from the start of the descent to the DAHLL is 81 ft. The distance from the DAHLL to RWY 9 is 27 ft.

REIL Rwy 9 0
 MIRL Rwy 9-27 and 18-36 0

CATEGORY	A	B	C	D
LNVA MDA	880-1	446 (500-1)	880-1 ³ / ₈ 446 (500-1 ³ / ₈)	NA
CIRCLING	1040-1	606 (700-1)	1100-1 ³ / ₄ 666 (700-1 ³ / ₄)	NA