

HROCK TWO DEPARTURE (RNAV)

SE-3, 23 JAN 2025 to 20 FEB 2025

**TOP ALTITUDE:
ASSIGNED BY ATC**

RNAV 1-DME/DME/IRU or GPS.
RADAR required.

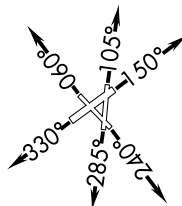
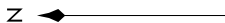
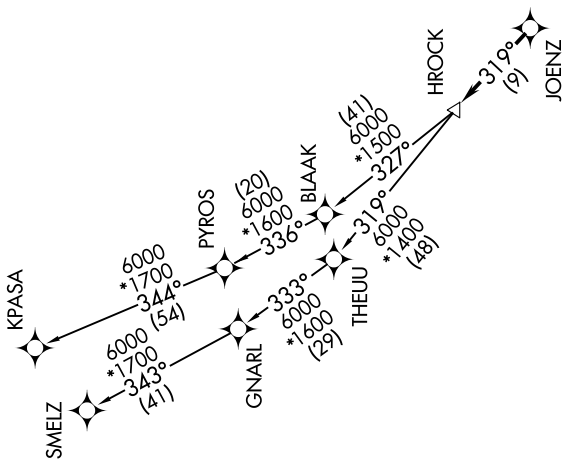
ATIS
120.55
GND CON
121.9

POMPANO BEACH TOWER ★
123.4
MIAMI DEP CON
126.05 251.1

TAKEOFF MINIMUMS

Rwys 6, 24, 28, 33: Standard.
Rwy 10: 300-1¼ or standard with minimum climb of 265' per NM to 300.
Rwy 15: 300-2 or standard with minimum climb of 425' per NM to 500.

NOTE: Jet aircraft only.
NOTE: Accelerate to 250K, if unable, advise ATC.



(NARRATIVE ON FOLLOWING PAGE)

NOTE: Chart not to scale.

SE-3, 23 JAN 2025 to 20 FEB 2025