

WAAS CH <b>73002</b> <b>W18A</b>	APP CRS <b>183°</b>	Rwy Idg TDZE Apt Elev	<b>4701</b> <b>2309</b> <b>2313</b>
----------------------------------------	------------------------	-----------------------------	-------------------------------------------

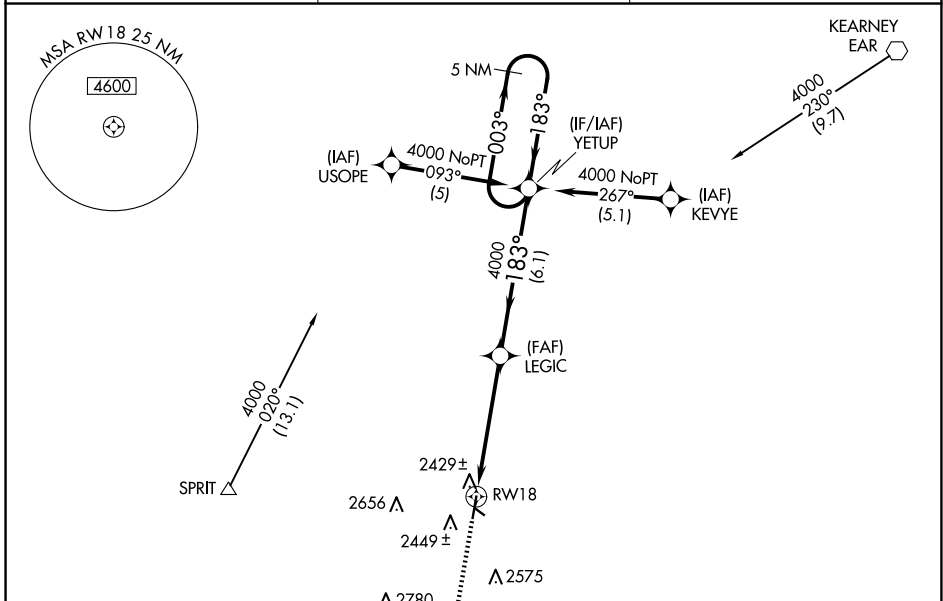
# RNAV (GPS) RWY 18

BREWSTER FLD (HDE)

**⚠** When local altimeter setting not received, use Kearney altimeter setting and increase DA to 2639 feet and all MDAs 80 feet, and increase Circling Cats C/D visibility ¼ SM. DME/DME RNP-0.3 NA. VDP NA when using Kearney altimeter setting.

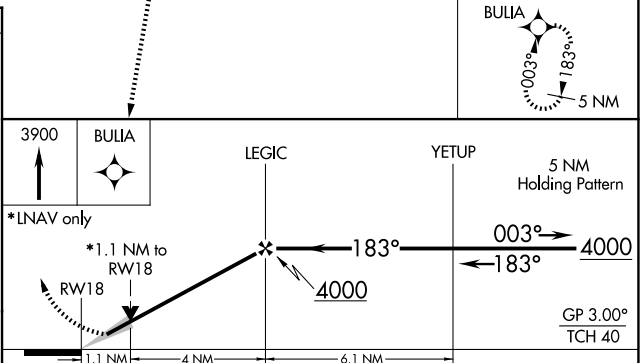
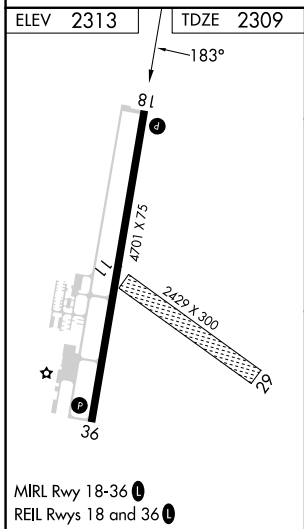
MISSED APPROACH: Climb to 3900 direct BULIA and hold.

AWOS-3 <b>121.325</b>	DENVER CENTER <b>132.7 226.675</b>	UNICOM <b>122.8 (CTAF) 0</b>
--------------------------	---------------------------------------	---------------------------------



NC-2, 23 JAN 2025 to 20 FEB 2025

NC-2, 23 JAN 2025 to 20 FEB 2025



CATEGORY	A	B	C	D
LPV DA	2559-1 250 (300-1)			
LNAV MDA	2680-1 371 (400-1)			2680-1¼ 371 (400-1¼)
CIRCLING	2840-1 527 (600-1)		3020-2 707 (800-2)	3020-2¼ 707 (800-2¼)