

NAPLES, FLORIDA

AL-6020 (FAA)

24249

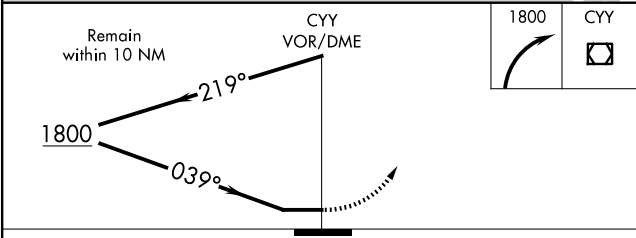
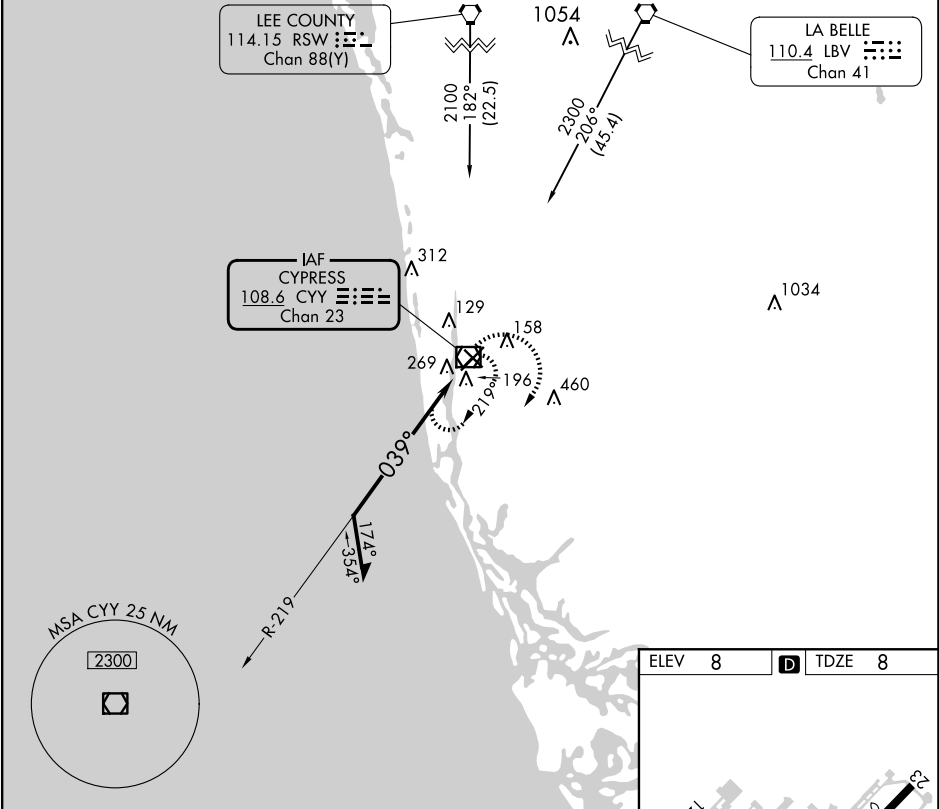
VOR/DME CYY 108.6 Chan 23	APP CRS 039°	Rwy Idg TDZE Apt Elev	5000 8 8
--	------------------------	-----------------------------	-------------------------------------

VOR RWY 5

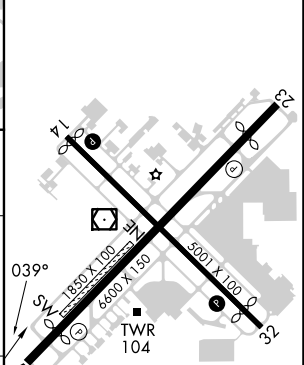
NAPLES MUNI (APF)

▲ MISSED APPROACH: Climbing right turn to 1800 in CYY VOR/DME holding pattern.

ATIS 134.225	FORT MYERS APP CON* 124.125 371.85	NAPLES TOWER* 128.5 (CTAF) 0	GND CON 121.6	CLNC DEL 118.0	CLNC DEL 124.125 (When twr closed)
------------------------	--	--	-------------------------	--------------------------	---



ELEV 8	D TDZE 8
--------	-----------------



CATEGORY	A	B	C	D
S-5	580-1	572 (600-1)	580-1 $\frac{5}{8}$	572 (600-1 $\frac{5}{8}$)
C CIRCLING	580-1	572 (600-1)	680-2 672 (700-2)	820-2 $\frac{3}{4}$ 812 (900-2 $\frac{3}{4}$)

MIRL Rwy 5-23 and 14-32
REIL Rwy 5, 14, 23 and 32

NAPLES, FLORIDA
Amdt 5C 25FEB21

26°09'N-81°47'W

NAPLES MUNI (APF) VOR RWY 5

SE-3, 23 JAN 2025 to 20 FEB 2025

SE-3, 23 JAN 2025 to 20 FEB 2025