

NDB/DME MAJ 316	APP CRS 062°	Rwy ldg TDZE Apt Elev	7913 7 7
Chan 114 (116.7)			

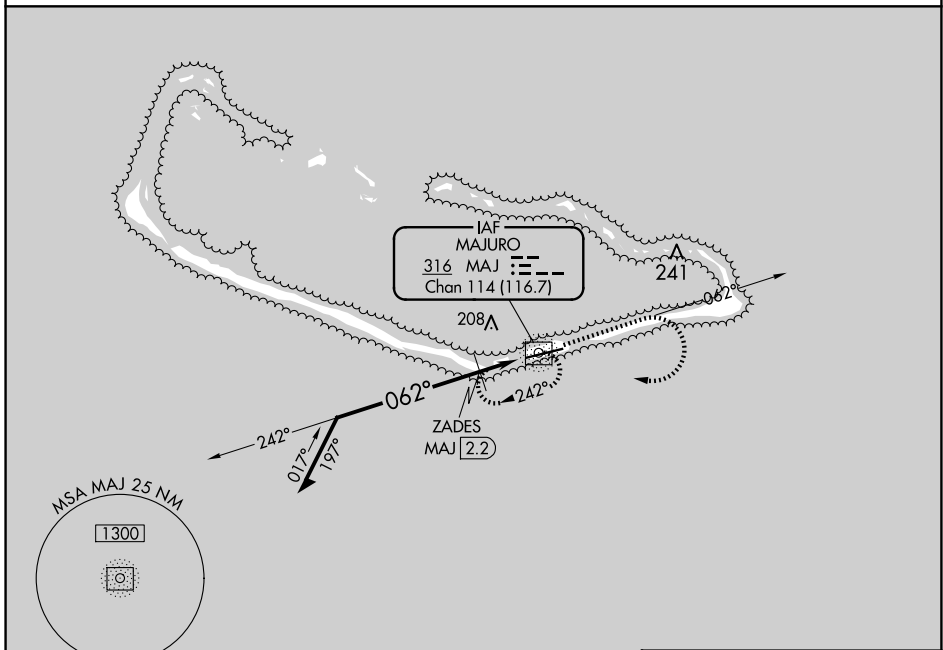
NDB RWY 7

AMATA KABUA INTL (MAJ)(PKMJ)

⚠ NA Rwy 7 helicopter visibility reduction below 3/4 SM NA. Obtain local altimeter setting on CTAF; when not received, procedure NA. Uncontrolled airspace below 5500.

MISSED APPROACH: Climb to 1000 on MAJ NDB/DME bearing 062° then climbing right turn to 1300 direct MAJ NDB/DME and hold.

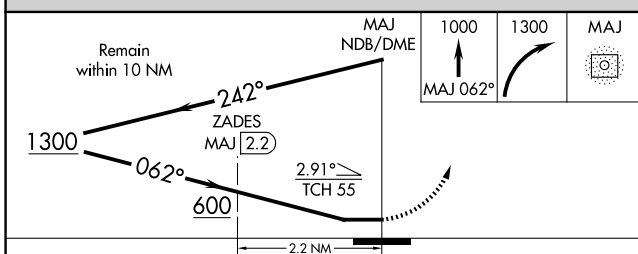
MAJURO RADIO
123.6 (CTAF) 0



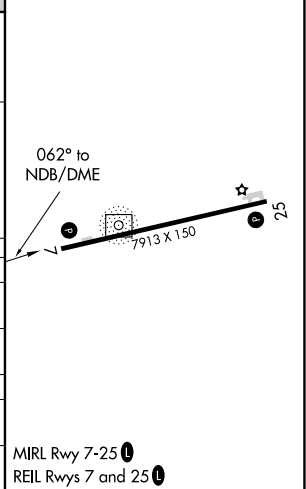
PAC, 26 DEC 2024 to 20 FEB 2025

PAC, 26 DEC 2024 to 20 FEB 2025

ELEV 7	TDZE 7
--------	--------



CATEGORY	A	B	C	D
S-7	600-1	593 (600-1)	600-1¾	593 (600-1¾)
C CIRCLING	600-1	593 (600-1)	600-1¾ 593 (600-1¾)	600-2 593 (600-2)
ZADES FIX MINIMUMS (DME REQUIRED)				
S-7	520-1	513 (600-1)	520-1¾	513 (600-1¾)
C CIRCLING	520-1	513 (600-1)	520-1½ 513 (600-1½)	560-2 553 (600-2)



NDB RWY 7