

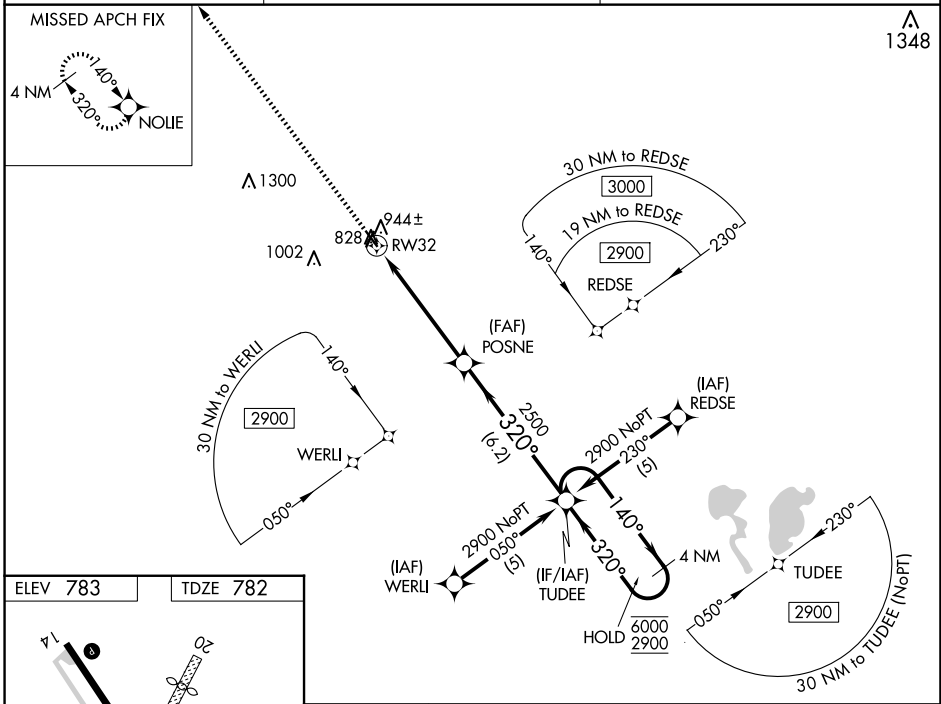
WAAS CH 70413 W32A	APP CRS 320°	Rwy Idg TDZE 782 Apt Elev 783	3899
--	------------------------	---	-------------

RNAV (GPS) RWY 32

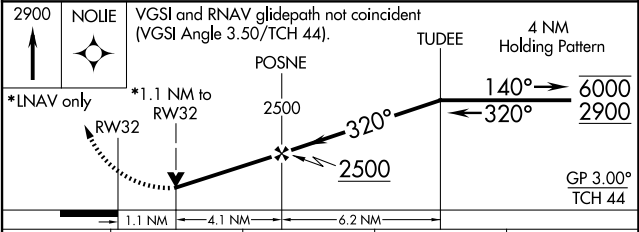
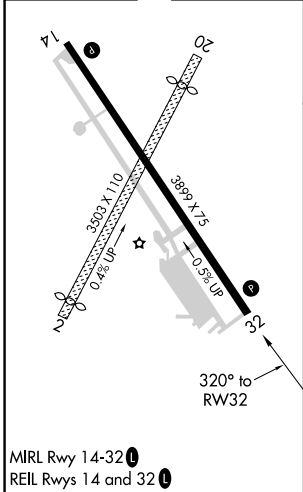
CHILLICOTHE MUNI (CHT)

RNP APCH.	<p>Baro-VNAV and VDP NA when using Kansas City Intl altimeter setting. Rwy 32 helicopter visibility reduction below 3/4 SM NA. For uncompensated Baro-VNAV systems, LNAV/VNAV NA below -16°C or above 54°C. When local altimeter setting not received, use Kansas City Intl altimeter setting and increase LPV DA to 1329 and LNAV/VNAV DA to 1335 and all MDA 200 feet, increase all LPV visibilities 3/8 SM and LNAV/VNAV visibilities 1/8 SM.</p>	MISSED APPROACH: Climb to 2900 direct NOLIE and hold.
-----------	--	---

AWOS-3 118.175	KANSAS CITY CENTER 125.25 235.975	UNICOM 122.8 (CTAF) 1
--------------------------	---	---------------------------------



ELEV 783	TDZE 782
----------	----------



CATEGORY	A	B	C	D
LPV DA	1148-1¼	366 (400-1¼)		NA
LNAV/VNAV DA	1154-1½	372 (400-1½)		NA
LNAV MDA	1200-1	418 (500-1)		NA

NC-3, 23 JAN 2025 to 20 FEB 2025

NC-3, 23 JAN 2025 to 20 FEB 2025