

# LUFKIN THREE DEPARTURE

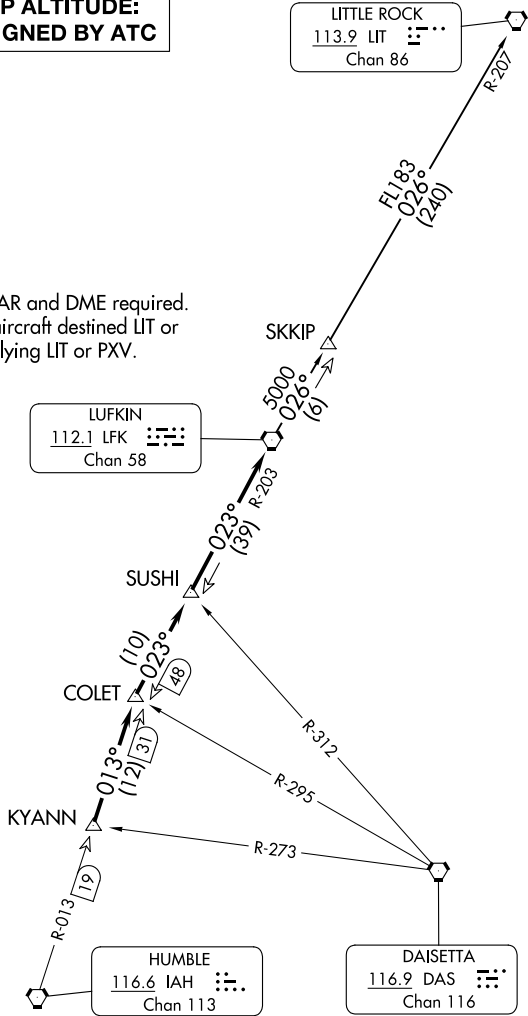
CLNC DEL  
121.15  
CTAF  
123.05  
HOUSTON DEP CON  
123.8 257.7

**TOP ALTITUDE:  
ASSIGNED BY ATC**

LITTLE ROCK  
113.9 LIT  
Chan 86

NOTE: RADAR and DME required.  
NOTE: For aircraft destined LIT or  
overflying LIT or PXV.

LUFKIN  
112.1 LFK  
Chan 58



TAKEOFF MINIMUMS  
Rwys 15, 33: Standard.

NOTE: Chart not to scale.

(CONTINUED ON FOLLOWING PAGE)

SC-5, 23 JAN 2025 to 20 FEB 2025

SC-5, 23 JAN 2025 to 20 FEB 2025