

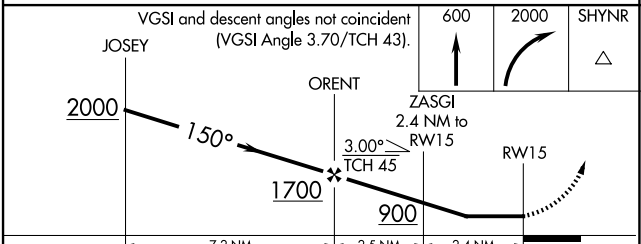
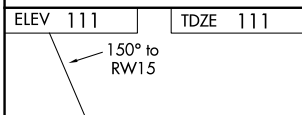
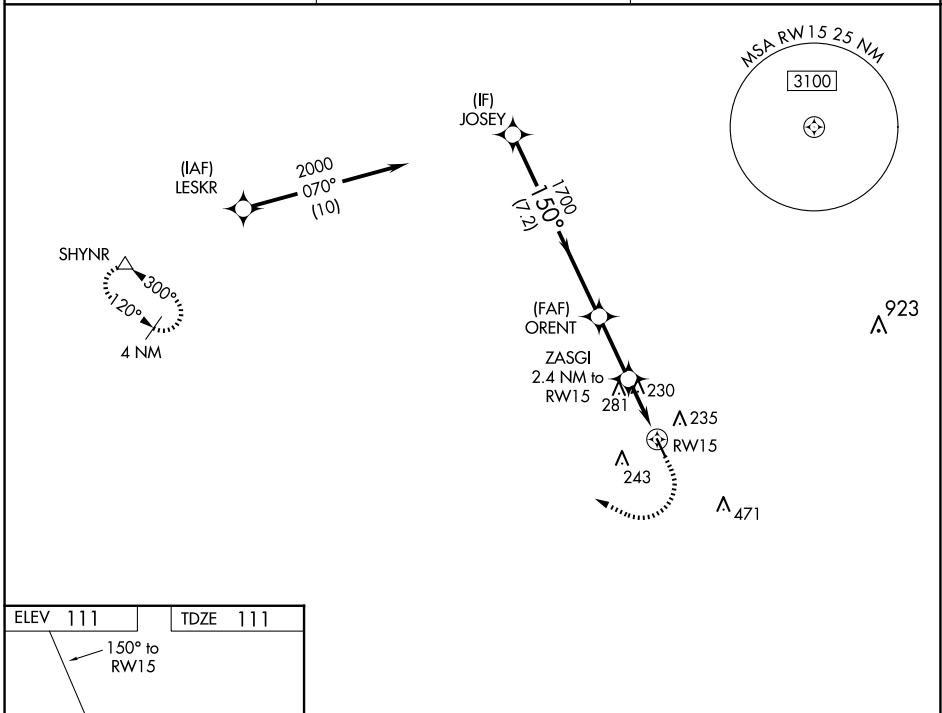
WAAS CH <b>40429</b> <b>W15A</b>	APP CRS <b>150°</b>	Rwy Idg TDZE Apt Elev	<b>3953</b> <b>111</b> <b>111</b>
--	------------------------	-----------------------------	---

# RNAV (GPS) RWY 15

WEST HOUSTON (IWS)

RNP APCH.	MISSED APPROACH: Climb to 600 then climbing right turn to 2000 direct SHYNR and hold.
Procedure NA at night. Rwy 15 helicopter visibility reduction below 1 SM NA. Use George Bush Intcntl/Houston altimeter setting.	

HOUSTON APP CON <b>123.8 257.7</b>	CLNC DEL <b>121.15</b>	UNICOM <b>123.05 (CTAF)</b>
---------------------------------------	---------------------------	--------------------------------



CATEGORY	A	B	C	D
LP MDA	540-1	429 (500-1)	540-1¼ 429 (500-1¼)	NA
LNAV MDA	580-1	469 (500-1)	580-1¾ 469 (500-1¾)	NA
CIRCLING	600-1 489 (500-1)	640-1 529 (600-1)	800-2 689 (700-2)	NA

REIL Rwy 15 and 33   
HIRL Rwy 15-33