

WAAS CH <b>93900</b> <b>W35A</b>	APP CRS <b>353°</b>	Rwy Idg TDZE Apt Elev	<b>5364</b> <b>650</b> <b>658</b>
--	------------------------	-----------------------------	---

# RNAV (GPS) RWY 35

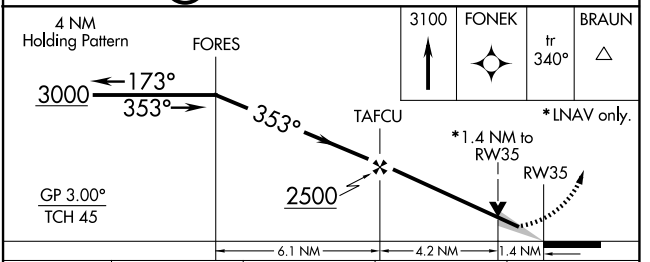
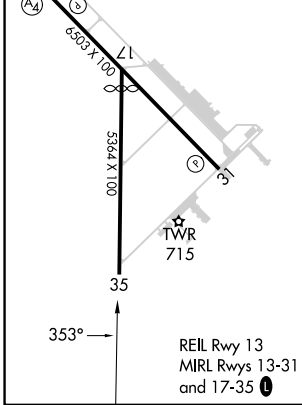
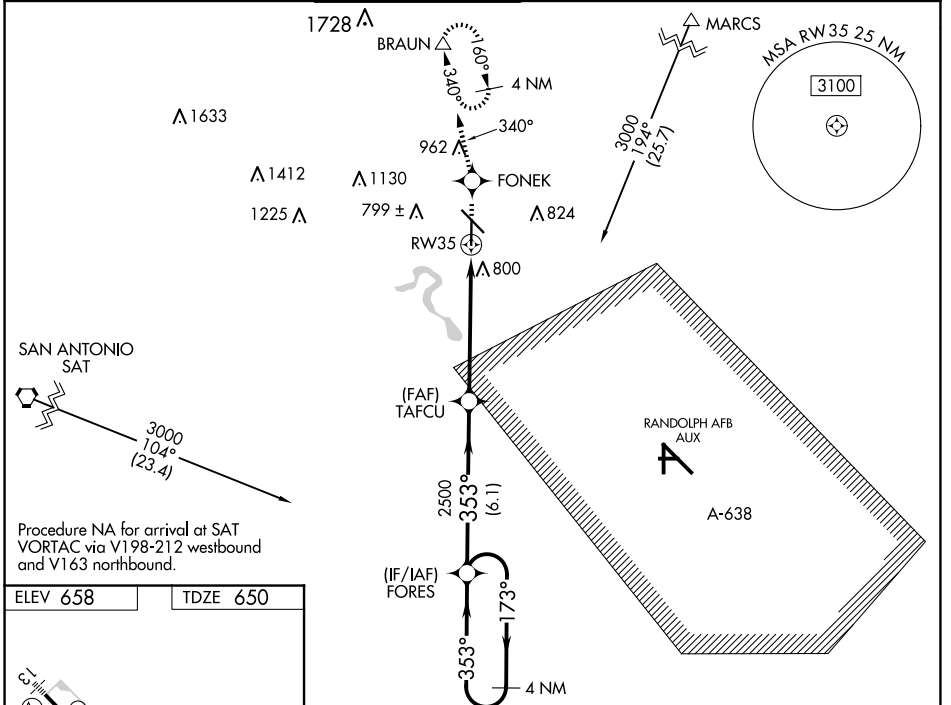
NEW BRAUNFELS NTL (BAZ)

RNP APCH.

When local altimeter setting not received, use San Marcos Rgnl altimeter setting; increase LPV DA to 972 feet, LNAV/VNAV DA to 1153 feet; increase all MDAs 60 feet and visibility LNAV Cat C and D ¼ SM. Baro-VNAV and VDP NA when using San Marcos Rgnl altimeter setting. For uncompensated Baro-VNAV systems, LNAV/VNAV NA below -16°C (4°F) or above 47°C (116°F).

MISSED APPROACH: Climb to 3100 direct FONEK and via 340° track to BRAUN and hold, continue climb-in-hold to 3100.

ATIS <b>119.325</b>	SAN ANTONIO APP CON <b>124.45 335.625</b>	NEW BRAUNFELS TOWER* <b>127.05 (CTAF) 285.4</b>	GND CON <b>120.175</b>	CLNC DEL <b>134.75</b>	CLNC DEL <b>134.75</b> (When twr closed)	UNICOM <b>122.7</b>
------------------------	--	--	---------------------------	---------------------------	--	------------------------



CATEGORY	A	B	C	D
LPV DA	929-1		279 (300-1)	
LNAV/VNAV DA	1110-1¾		460 (500-1¾)	
LNAV MDA	1140-1	490 (500-1)	1140-1⅜ 490 (500-1⅜)	1140-1½ 490 (500-1½)

SC-3, 23 JAN 2025 to 20 FEB 2025

SC-3, 23 JAN 2025 to 20 FEB 2025