

APP CRS	Rwy Idg	5001
173°	TDZE	892
	Apt Elev	892

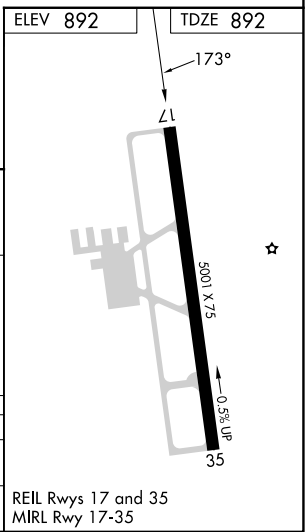
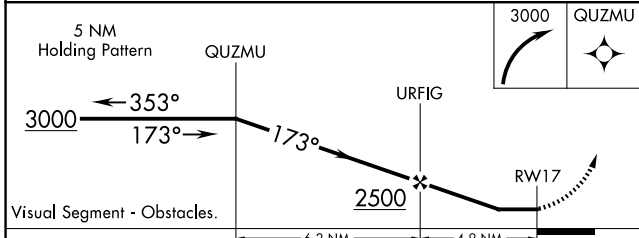
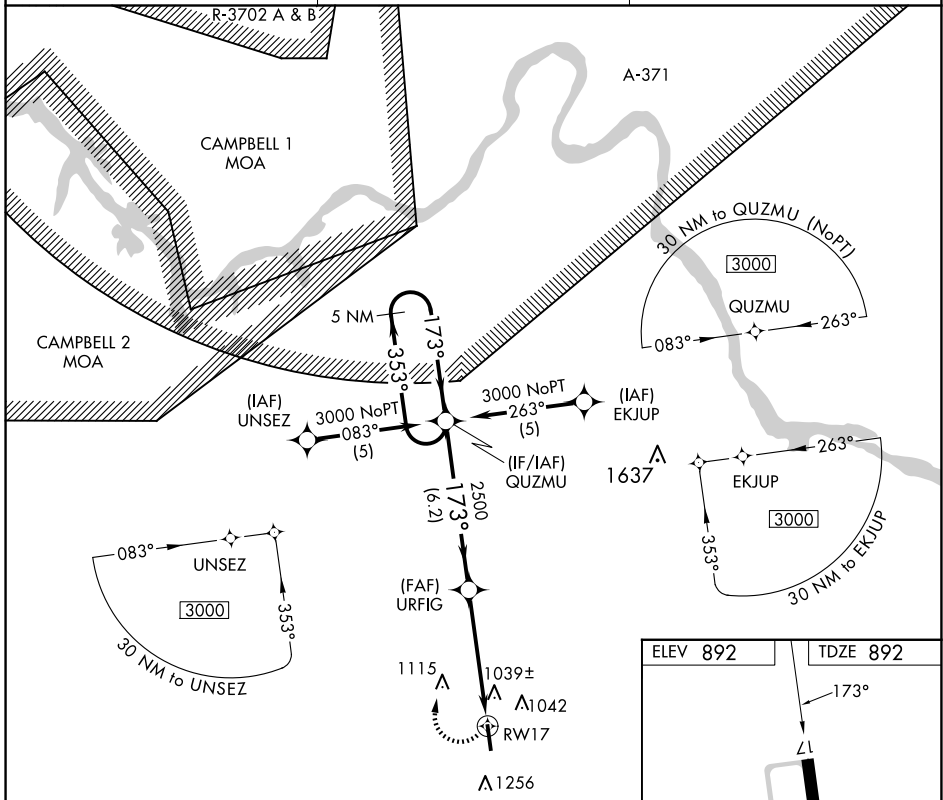
RNAV (GPS) RWY 17

DICKSON MUNI (M02)

N Night Landing: Rwy 35 NA. DME/DME RNP-0.3 NA. Helicopter visibility reduction below 3/4 SM NA. When local altimeter setting not received, use Nashville Intl altimeter setting and increase all MDA 140 feet and increase LNAV Cat C and Circling Cat B visibility 1/4 mile and LNAV Cat D and Circling Cat C/D 1/2 mile.

MISSED APPROACH: Climbing right turn to 3000 direct QUZMU and hold.

AWOS-3 123.875	MEMPHIS CENTER 125.85 379.25	UNICOM 122.8 (CTAF)
--------------------------	--	-------------------------------



CATEGORY	A	B	C	D
LNAV MDA	1300-1	408 (500-1)	1300-1 1/8	408 (500-1 1/8)
C CIRCLING	1420-1 528 (600-1)	1560-1 668 (700-1)	1560-1 3/4 668 (700-1 3/4)	1560-2 668 (700-2)

REIL Rwy 17 and 35
MIRL Rwy 17-35

SE-1, 23 JAN 2025 to 20 FEB 2025

SE-1, 23 JAN 2025 to 20 FEB 2025