

|  |                        |   |
|--|------------------------|---|
| WAAS<br>CH <b>45915</b><br><b>W09A</b> | APP CRS<br><b>094°</b> | Rwy Idg <b>5502</b><br>TDZE <b>141</b><br>Apt Elev <b>141</b> |
|--|------------------------|---|

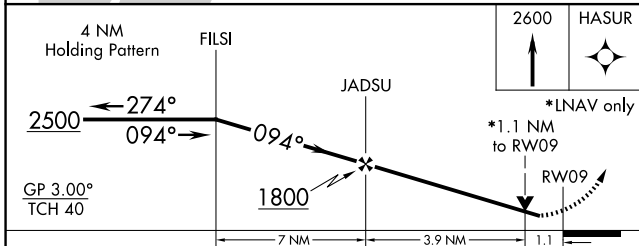
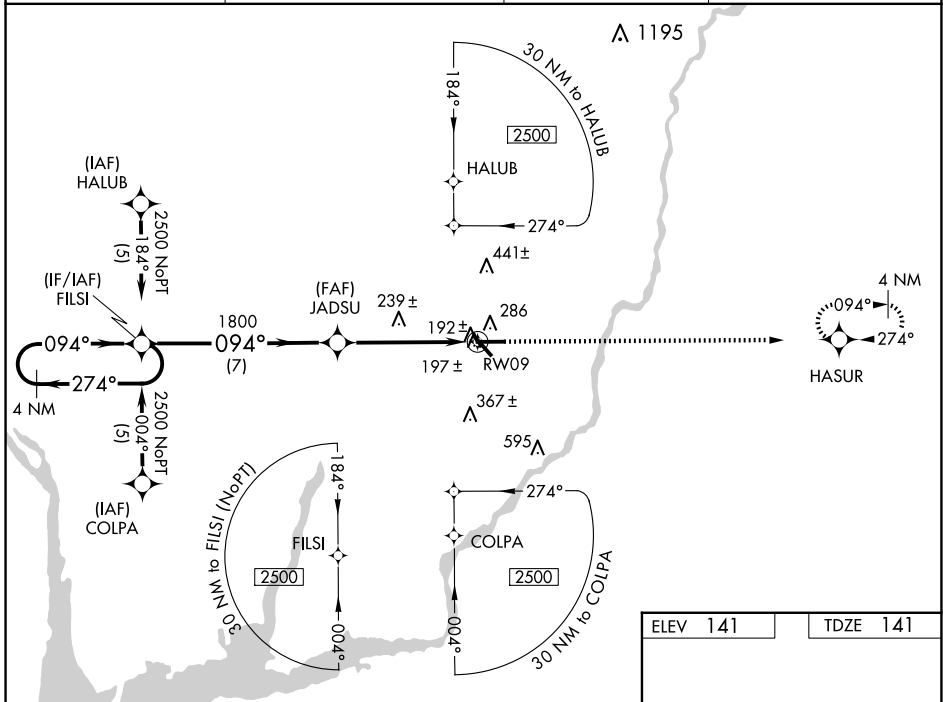
# RNAV (GPS) RWY 9

DECATUR COUNTY INDUSTRIAL AIR PARK (BGE)

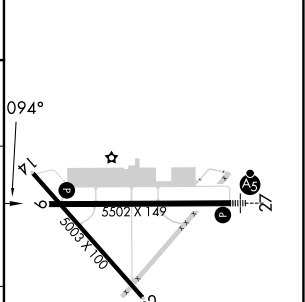
**⚠** For uncompensated Baro-VNAV systems, LNAV/VNAV NA below -15°C (5°F) or above 48°C (118°F).  
**⚠** DME/DME RNP-0.3 NA. Visibility reduction by helicopters NA. VDP and Baro-VNAV NA when using Tallahassee Intl altimeter setting. When local altimeter setting not received, use Tallahassee Intl altimeter setting and increase LPV DA to 522 feet and LNAV/VNAV DA to 562 feet; increase all MDAs 100 feet and increase LPV all Cats, LNAV/VNAV all Cats and LNAV Cat C, D visibility 1/4 SM and Circling Cat C, D visibility 1/2 SM.

**MISSED APPROACH:**  
Climb to 2600 direct HASUR and hold.

|                            |  |                                   |                                 |
|----------------------------|--|-----------------------------------|---------------------------------|
| AWOS-3PT<br><b>121.125</b> | TALLAHASSEE APP CON*<br><b>128.7 254.3</b> | CLNC DEL<br><b>124.775 335.65</b> | UNICOM<br><b>122.975</b> (CTAF) |
|----------------------------|--|-----------------------------------|---------------------------------|



|                 |                 |
|-----------------|-----------------|
| ELEV <b>141</b> | TDZE <b>141</b> |
|-----------------|-----------------|



| CATEGORY     | A                   | B                   | C                   | D                   |
|--------------|---------------------|---------------------|---------------------|---------------------|
| LPV DA       | 427-1 286 (300-1)   |                     |                     |                     |
| LNAV/VNAV DA | 467-1¼ 326 (400-1¼) |                     |                     |                     |
| LNAV MDA     | 540-1 399 (400-1)   |                     | 540-1¼ 399 (400-1¼) |                     |
| CIRCLING     | 600-1 459 (500-1)   | 800-1¾ 659 (700-1¾) |                     | 860-2¼ 719 (800-2¼) |

HIRL Rwy 9-27 **0**

SE-4, 23 JAN 2025 to 20 FEB 2025

SE-4, 23 JAN 2025 to 20 FEB 2025