

| | | |
|--|------------------------|---|
| VORTAC RQZ 112.2 Chan 59 | APP CRS 313° | Rwy Idg 5010 TDZE 665 Apt Elev 689 |
|--|------------------------|---|

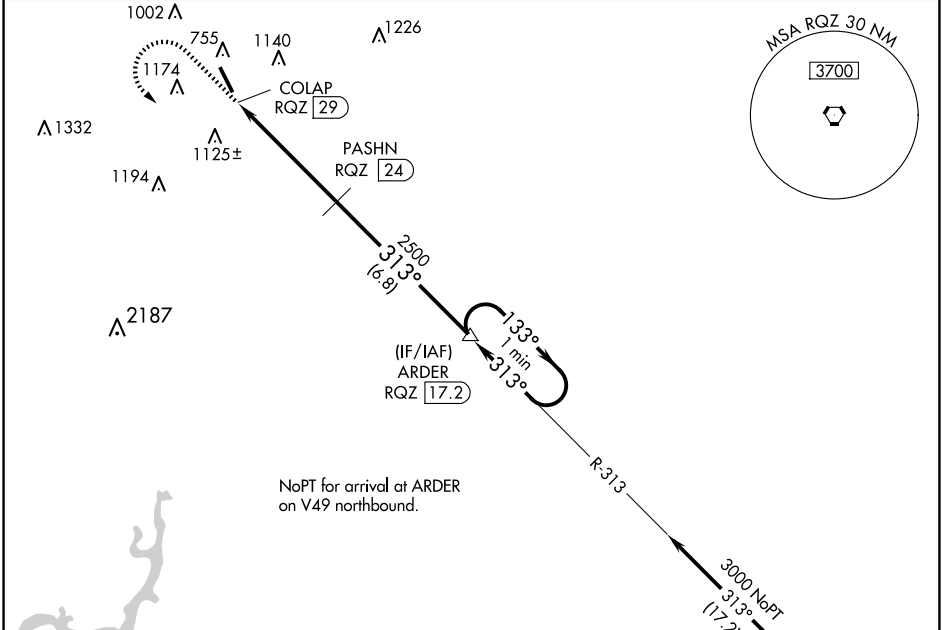
VOR/DME RWY 34

ABERNATHY FLD (GZS)

⚠ NA When local altimeter setting not received, use Huntsville Exec Tom Sharp Jr Fld altimeter setting and increase all MDA 100 feet and increase S-34 Cats A/B visibility ¼ mile and Cats C/D visibility ½ mile; increase Circling Cat B visibility ¼ mile and Cat C visibility ½ mile. Night landing: Rwy 16 NA. Helicopter visibility reduction below ¾ SM NA.

MISSED APPROACH: Climb to 2000 then climbing left turn to 3000 on RQZ VORTAC R-313 to ARDER/RQZ 17.2 DME and hold.

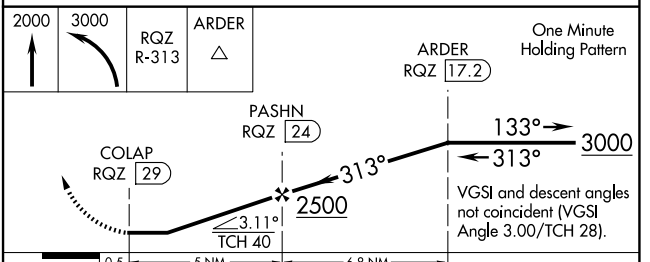
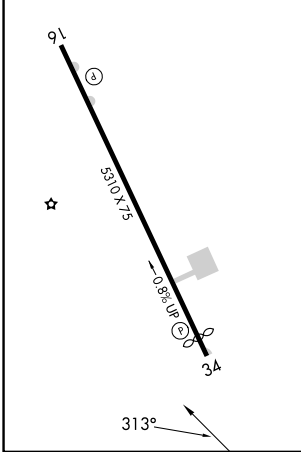
| | | |
|--------------------------|--|-------------------------------|
| AWOS-3 118.275 | MEMPHIS CENTER 125.85 379.25 | UNICOM 122.8 (CTAF) |
|--------------------------|--|-------------------------------|



SE-1, 23 JAN 2025 to 20 FEB 2025

SE-1, 23 JAN 2025 to 20 FEB 2025

| | |
|--------------------------------------|-----------------|
| ELEV 689 | TDZE 665 |
| MIRL Rwy 16-34 REIL Rws 16 and 34 | |



| CATEGORY | A | B | C | D |
|-------------------|-----------------------|-------------------------|-------------------------|------------------------|
| S-34 | 1520-1 855 (900-1) | 1520-1¼ 855 (900-1¼) | 1520-2½ | 855 (900-2½) |
| C CIRCLING | 1520-1¼ | 831 (900-1¼) | 1520-2½ 831 (900-2½) | 1640-3 951 (1000-3) |