

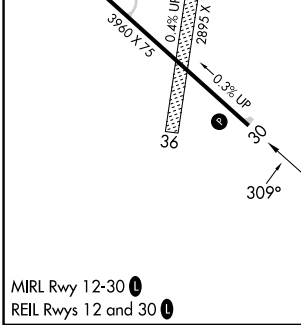
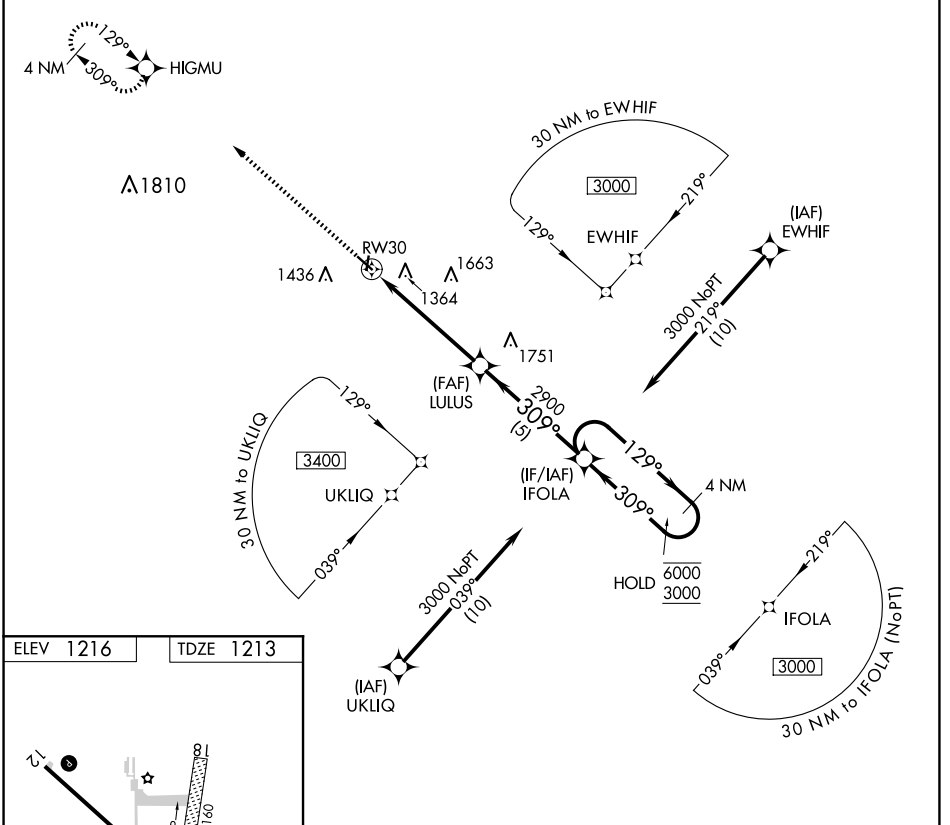
APP CRS	Rwy Idg	<b>3960</b>
<b>309°</b>	TDZE	<b>1213</b>
	Apt Elev	<b>1216</b>

# RNAV (GPS) RWY 30

ALGONA MUNI (A.X.A)

RNP APCH.	MISSED APPROACH: Climb to 3000 direct HIGMU and hold.
▼ Rwy 30 helicopter visibility reduction below 3/4 SM NA.	

AWOS-3 <b>118.475</b>	MINNEAPOLIS CENTER <b>134.0 288.3</b>	UNICOM <b>122.8 (CTAF) 0</b>
--------------------------	--	---------------------------------



3000 HIGMU	IFOLA 4 NM Holding Pattern
LULUS 2900	IFOLA 6000/3000
1.1 NM to RW30	129° → 6000
≤ 3.00° TCH 40	← 309° 3000
1.1   4.1 NM   5 NM	
CATEGORY	A B C D
LNAV MDA	1600-1 387 (400-1) NA

NC-3, 23 JAN 2025 to 20 FEB 2025

NC-3, 23 JAN 2025 to 20 FEB 2025