

VOR/DME OLS <b>114.65</b> Chan <b>93(Y)</b>	APP CRS <b>139°</b>	Rwy Idg TDZE Apt Elev <b>N/A</b> <b>N/A</b> <b>3955</b>
---	------------------------	--

# VOR-B

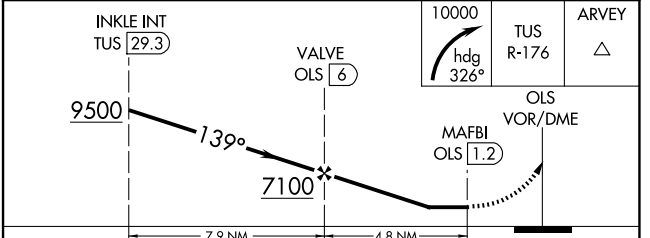
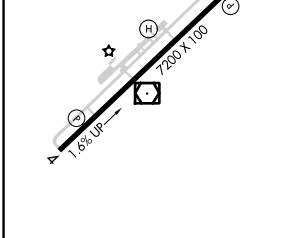
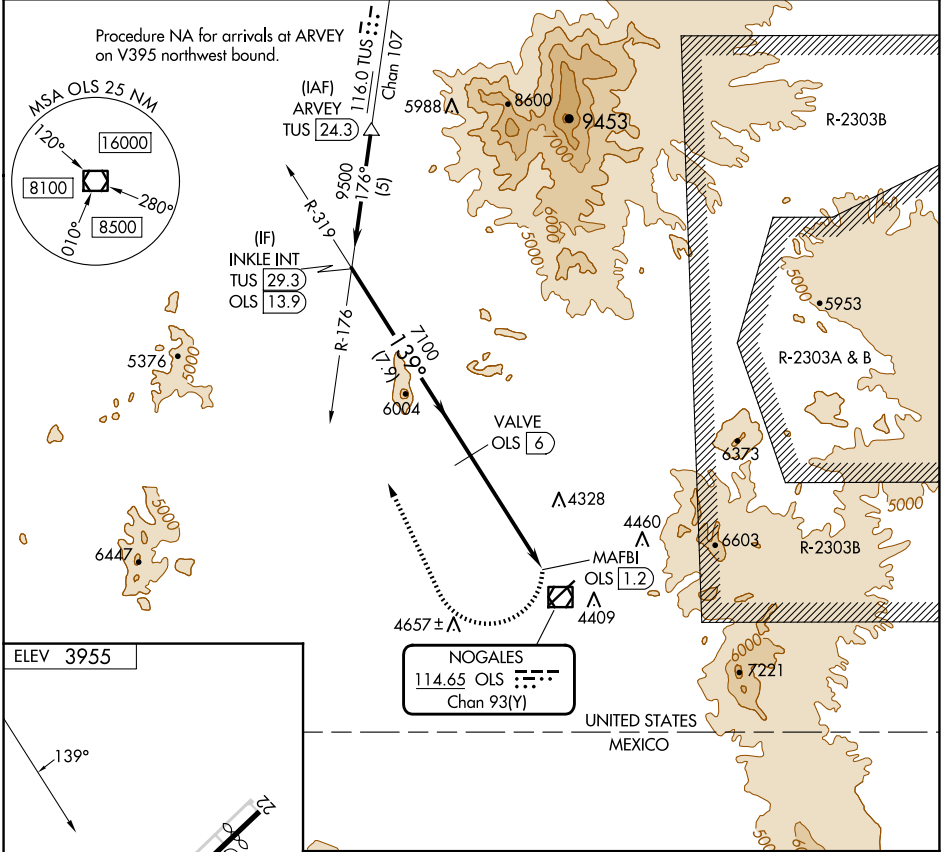
NOGALES INTL (OLS)

DME required.

When local altimeter setting not received, procedure NA.

MISSED APPROACH: Climbing right turn to 10000 on heading 326° and TUS R-176 to ARVEY/TUS 24.3 DME.

ASOS <b>121.125</b>	TUCSON APP CON <b>118.75 269.55</b>	UNICOM <b>122.8 (CTAF) 0</b>
------------------------	--	---------------------------------



CATEGORY	A	B	C	D
CIRCLING	6640-1¼ 2685 (2700-1¼)	6640-1½ 2685 (2700-1½)	6640-3 2685 (2700-3)	6820-3 2865 (2900-3)

SW-4, 23 JAN 2025 to 20 FEB 2025

SW-4, 23 JAN 2025 to 20 FEB 2025