

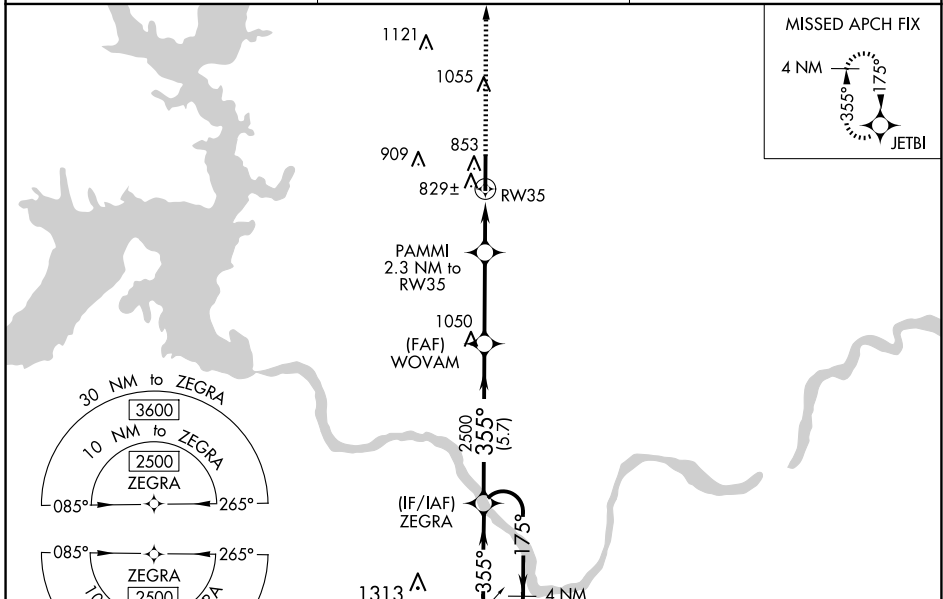
WAAS CH <b>48918</b> <b>W35A</b>	APP CRS <b>355°</b>	Rwy Idg TDZE Apt Elev	<b>6800</b> <b>694</b> <b>699</b>
--	------------------------	-----------------------------	---

# RNAV (GPS) RWY 35

DURANT RGNL/EAKER FLD (DUA)

RNP APCH.	MISSED APPROACH: Climb to 2500 direct JETBI and hold.
<p>▼</p> <p>▲ For uncompensated Baro-VNAV systems, LNAV/VNAV NA below -16°C or above 54°C.</p>	

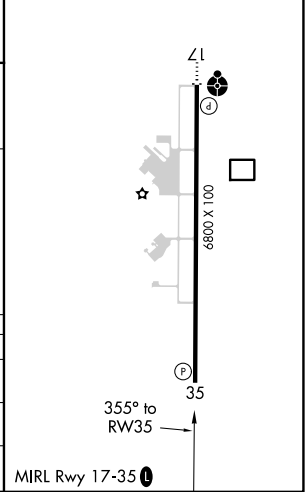
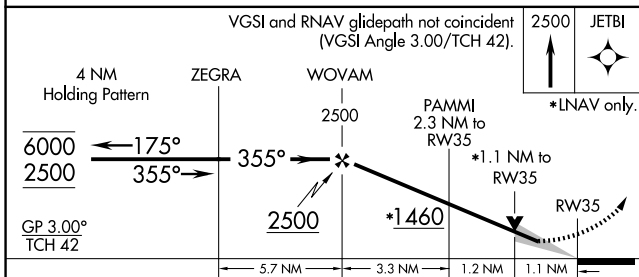
AWOS-3 <b>124.175</b>	FORT WORTH CENTER <b>124.75 323.0</b>	UNICOM <b>123.05 (CTAF) 0</b>
--------------------------	--	----------------------------------



SC-1, 23 JAN 2025 to 20 FEB 2025

SC-1, 23 JAN 2025 to 20 FEB 2025

ELEV 699	TDZE 694
----------	----------



CATEGORY	A	B	C	D
LPV DA	894-3/4	200 (200-3/4)		NA
LNAV/VNAV DA	1086-1 1/8	392 (400-1 1/8)		NA
LNAV MDA	1080-1	386 (400-1)	1080-1 1/8 386 (400-1 1/8)	NA