

PUNTA GORDA, FLORIDA

AL-6178 (FAA)

24249

LOC/DME I-PGD 109.75 Chan 34 (Y)	APP CRS 035°	Rwy Idg TDZE Apt Elev	7193 24 26
--	------------------------	-----------------------------	---------------------------------------

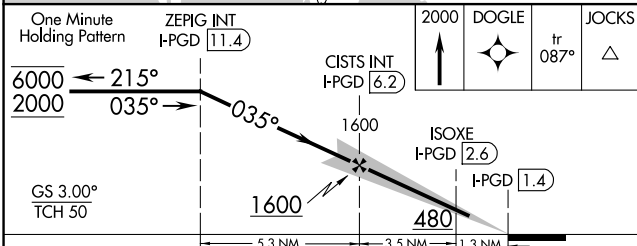
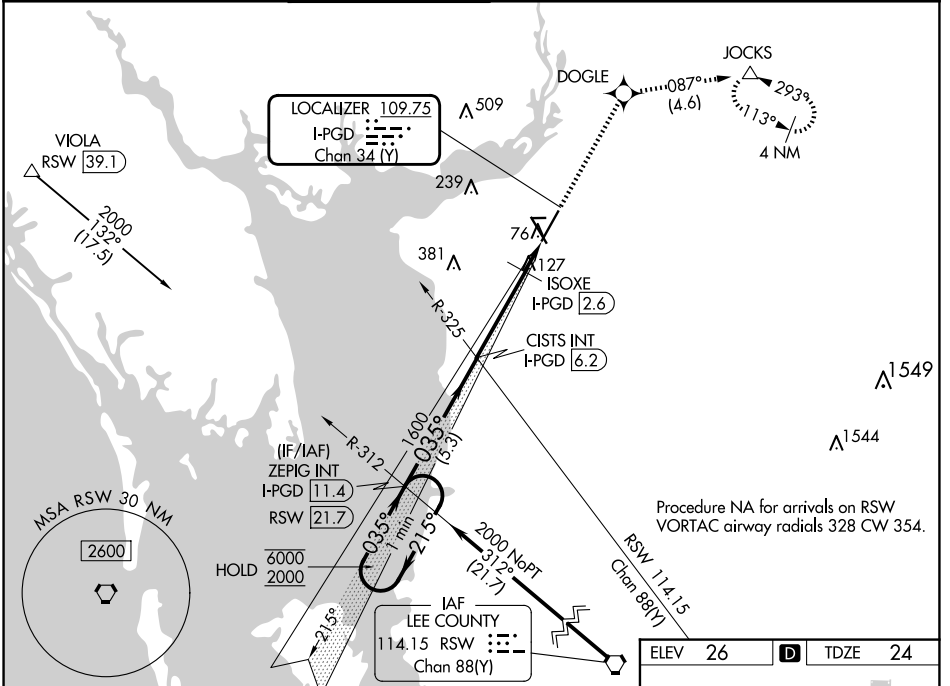
ILS or LOC RWY 4

PUNTA GORDA (PGD)

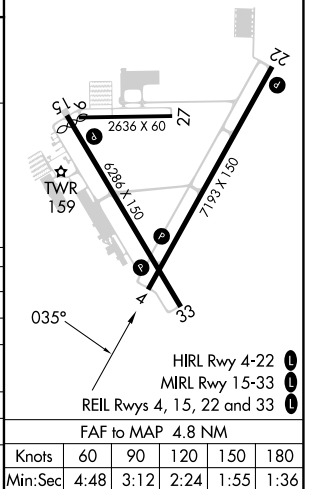
RNP APCH - GPS.

MISSED APPROACH: Climb to 2000 direct DOGLE and on track 087° to JOCKS and hold.

ATIS ★ 135.675	FORT MYERS APP CON ★ 127.05 306.2	PUNTA GORDA TOWER ★ 121.0 (CTAF) 0	GND CON 119.55	CLNC DEL 119.55	CLNC DEL 127.05 (When twr closed)	UNICOM 122.975
--------------------------	---	--	--------------------------	---------------------------	--	--------------------------



ELEV 26	D	TDZE 24
---------	----------	---------



CATEGORY	A	B	C	D
S-ILS 4		256-¾	232 (300-¾)	
S-LOC 4	480-1	456 (500-1)	480-1⅞	456 (500-1⅞)
C CIRCLING	480-1 454 (500-1)	580-1 554 (600-1)	600-1½ 574 (600-1½)	740-2¼ 714 (800-2¼)
ISOXE FIX MINIMUMS (DME REQUIRED)				
S-LOC 4	380-1	356 (400-1)		
C CIRCLING	460-1 434 (500-1)	580-1 554 (600-1)	600-1½ 574 (600-1½)	740-2¼ 714 (800-2¼)

FAF to MAP 4.8 NM					
Knots	60	90	120	150	180
Min:Sec	4:48	3:12	2:24	1:55	1:36

PUNTA GORDA, FLORIDA
Amdt 1 05SEP24

26°55'N-81°59'W

PUNTA GORDA (PGD)

ILS or LOC RWY 4

SE-3, 23 JAN 2025 to 20 FEB 2025

SE-3, 23 JAN 2025 to 20 FEB 2025